



CONTENTS

Introduction 2

Highlights of Activities 3

Oveview of Graduate Education 6

Admissions 6

Enrollment..... 9

Graduate Student Experience 11

Degrees 14

APPENDIX 16

Admissions 17

Enrollment..... 28

Degrees 52

New Degree and Certificate Programs 58

Selected Activities 59

Introduction

Research, scholarship, and creative activity at the University of Connecticut have a national and international impact, and excellence in these areas is inseparable from excellence in graduate education. The University of Connecticut is a great research university because it has both world-class scholars and world-class graduate programs. The University awards 17 types of graduate degrees (4 research doctorates, 2 clinical doctorates, 11 master's). Seventy-six fields of study lead to doctoral degrees, and 107 fields of study lead to master's degrees. In addition, the University of Connecticut awards more than 90 post-baccalaureate, graduate, and post-master's certificate programs. The Graduate School is responsible for overseeing all post-baccalaureate degree or certificate programs at the University of Connecticut, except for the MD, DMD, JD, LLM, and PharmD.

With the Graduate Faculty Council and the Executive Committee of The Graduate School, The Graduate School ensures the academic integrity of graduate programs, oversees the development of new programs, and develops new ideas and new approaches to graduate education. Through the Graduate Faculty Council, The Graduate School also develops policies that govern the academic relationship of graduate students with the University. The Graduate School provides financial support for graduate students through fellowships administered by individual doctoral degree programsⁱ and through the Jorgensen, Harriot, and Crandall Fellowship programs. In addition, The Graduate School supports current doctoral students with dissertation fellowships and awards that support participation in professional conferences. The Graduate School coordinates efforts to ensure that graduate programs attract and retain graduate and postdoctoral scholars from the widest possible array of backgrounds and experiences, and The Graduate School covers costs of education for recipients of prestigious national fellowships that are not covered by fellowship awards or training grants. We work with the Graduate Student Senate and the Graduate Students of Color Association to promote a vibrant community of graduate students and postdoctoral scholars at the University. The Graduate School also plays a key role in the implementation and interpretation of collective bargaining agreements with graduate assistants and post-doctoral research associates. Finally, The Graduate School oversees all applications to graduate programs at the University of Connecticut, helps to resolve conflicts involving

i The Graduate School provides funds for pre-doctoral fellowships that departments use to provide financial support to doctoral students at their own discretion.

faculty and graduates students or postdoctoral scholars, provides advice to graduate students who are considering leaves of absence, and is developing programs to support graduate students and postdoctoral scholars from minoritized groups and to help faculty become better mentors of graduate students and postdoctoral scholars.

Highlights of Activities

In 2021/2022 The Graduate School continued to focus its efforts on supporting graduate students. We released a final version of the [BIPOC Graduate Student Support: Information and Assessment Summary](#) in August 2021. That report identified three priorities for The Graduate School:

- **Improving graduate student advising:** We met with a focus group of faculty to discuss best practices in graduate student advising. One of our two faculty affiliates in 2022/2023 will focus their efforts on developing a program to help faculty improve their mentoring skills, with a particular focus on improving their ability to mentor minoritized graduate students.
- **Analyzing policies for racially disparate outcomes:** We reviewed policies and procedures associated with application and admission and with awarding our Harriott and Crandall fellowships with support from the Office of Diversity and Inclusion.
- **Building our capacity to support minoritized graduate students:** A group of staff members met bi-weekly to identify ways to improve support for minoritized graduate students. Our faculty affiliate program arose from these discussions, and the second faculty affiliate will focus on developing programs that fosters a sense of community among minoritized graduate students.

Shortly after releasing the BIPOC Student Support report, we released a new [strategic plan](#) for The Graduate School. It describes our mission as a set of activities grouped within three broad themes - **innovation**, **community**, and **service** - that will guide our work through 2026.

Innovation

- The Graduate School played a leading role (in collaboration with the Center for Excellence in Teaching and Learning) in two major new initiatives:

- The creation of a new MS in Data Science, which is enrolling its first class in Fall 2022.
- Improving the teaching skills of graduate students through UConn's membership in the Center for the Integration of Research, Teaching, and Learning (CIRTL).
- The Graduate Faculty Council approved a bylaws change that requires a departmental role in assisting students should a major advisor choose to resign. Instead, the decision must be reviewed by the department.

Community

- We released a final version of the [BIPOC Graduate Student Support: Information and Assessment Summary](#) in August 2022.
- The Graduate School led development of the Graduate Student Life Fair, a virtual event in October 2021 featuring 25 vendors (graduate student organizations, on campus resources, off campus businesses).
- The Graduate School led development of a survey for graduate students with disabilities, which led to a virtual panel on Navigating Graduate School with Disabilities (February 2022).
- The Graduate School started and leads a monthly affinity group for graduate students who are neurodivergent or who have disabilities, including an online community in Slack.

Service

- The Graduate School played a central role in the successful renegotiation of the collective bargaining agreement with graduate assistants.
- The Graduate School led development of an [onboarding/orientation page](#) for graduate assistants.

Goals for 2022/2023

In 2022/2023 the three major goals for The Graduate School align with the three broad themes identified in the [strategic plan](#). Specifically,

- **Innovation** - The Graduate School will **co-lead implementation and delivery of the MS in Data Science** for the first cohort of students in the program. The Graduate School will also **co-lead the University's participation in the Center for the Integration of Research, Teaching, and Learning (CIRTL)**, which "seeks to enhance excellence in STEM undergraduate education through development of a national faculty committed to implementing and advancing evidence-based

teaching practices for diverse learners.” CIRTl programs are focused on helping graduate students developing their teaching skill, and at UConn CIRTl programs are open to graduate students in any discipline.

- **Metric #1:** Enroll at least 20 students in the MS in Data Science
- **Metric #2:** Engage at least 20 graduate students in more than one CIRTl activity

- **Community** - The Graduate School will ***sponsor two faculty affiliates for inclusive excellence to enhance our support of graduate students***. One fellow will develop and execute a program that contributes to an equitable and supportive educational environment and that fosters a sense of community, with a particular focus on providing support for graduate students and postdocs from minoritized groups. The other fellow will design and develop a program to provide mentorship training for faculty, with a special emphasis on helping faculty understand the challenges faced by graduate students and postdocs from minoritized groups. In both cases the affiliates will develop programs that can be continued by future faculty affiliates with support from staff of The Graduate School.
 - **Metric #1:** Offer events for at least two different affinity groups in both Fall 2022 and Spring 2023.
 - **Metric #2:** Develop and offer at least two training workshops for faculty mentors (possibly including mentees) based on the curriculum from the Center for the Improvement of Mentored Experience in Research ([CIMER](#)).

- **Service** - The Graduate School will continue to ***host presentations and workshops*** for faculty and staff on topics associated with graduate and post-doctoral education, coordinate University-level recruiting that focuses on ***enhancing the diversity of applicants***, and ***contribute to negotiation of contract reopener with postdoctoral research associates***.
 - **Metric #1:** Offer at least 5-6 Timely Topics sessions in both Fall 2022 and Spring 2023.
 - **Metric #2:** Continue to represent the University at IRT, SACNAS, ABRCMS, and oSTEM. Coordinate the University’s participation in the Institute on Teaching and Mentoring.
 - **Metric #3:** Reach agreement with union on issues included in the postdoctoral research associate contract reopener (childcare, tuition, international postdocs).

Overview of Graduate Education

Nearly one-fourth of all students enrolled at the University of Connecticut are graduate students.ⁱⁱ The following sections of the report provide a broad overview of trends in application, admission, enrollment, and degree conferral since 2012. Detailed numerical data by school/college is available in the appendices.

Admissions

Applications for Fall 2022 were still open when these data were collected. The apparent decline in applications from AY 2021 to AY 2022 could reflect incomplete data. As a result, this discussion focuses on the pattern of applications through AY 2021.

Applications to graduate programs at the University of Connecticut reached a peak of 11,859 in AY 2018 and declined to 10,690 in AY 2021ⁱⁱⁱ (Figure 1). We anticipate that total applications in AY 2022 will be similar to those since 2019. Although applications to graduate programs peaked in AY 2018, offers of admissions increased steadily since 2010, and the number of new first-time enrollments has remained stable since 2017, reflecting a decline in the number of offers accepted from 65 percent in AY 2015 to 49 percent in AY 2021.

The decline in applications is a result of declines in applications to master's programs that was only partially offset by increases in applications to doctoral and certificate programs (Figure 2).

The decline in master's applications from AY 2018 through AY 2020 is accounted for primarily by declines in applications to two large programs in the School of Business (Figure 3). Both programs enroll a large number of international students, and the declines in applications to those programs

ii 7164 out of 31,190 in Fall 2021.

iii The numbers reported are the number of applications for admission to a particular academic year (Summer, Fall, or Spring). For example, The AY 2018 number of 11,859 applications received corresponds to applications received for admission to Summer 2017, Fall 2017, or Spring 2018. Since most applications are received for admission to Fall, the AY 2018 number primarily reflects applications received in Fall 2017 and early Spring 2018.

appear largely to account for the 21 percent decline in international applications from their peak in 2018 (Figure 4). Current application data suggests that the recent decline in international applications could be reversed in AY 2022. Applications from domestic, non-white students have shown a steady increase over the last decade, increasing at a rate of approximately 6 percent per year.

Figure 1. Applications

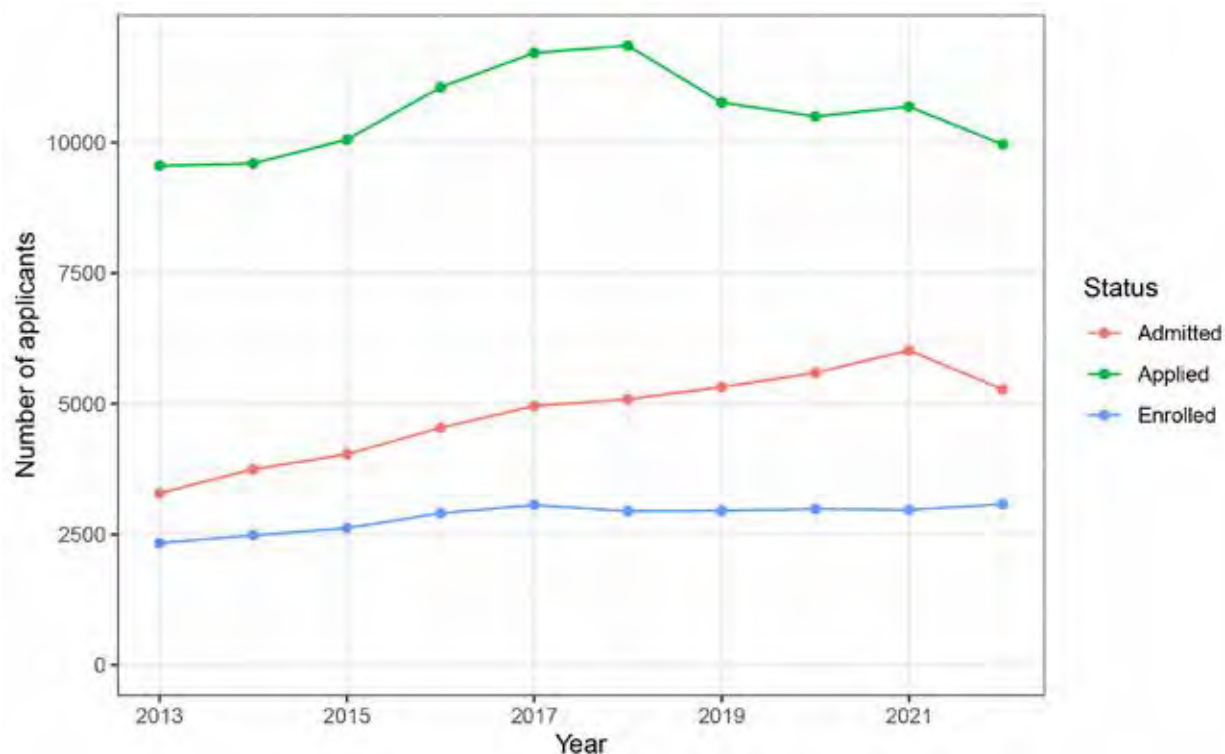


Figure 2. Applications by Level

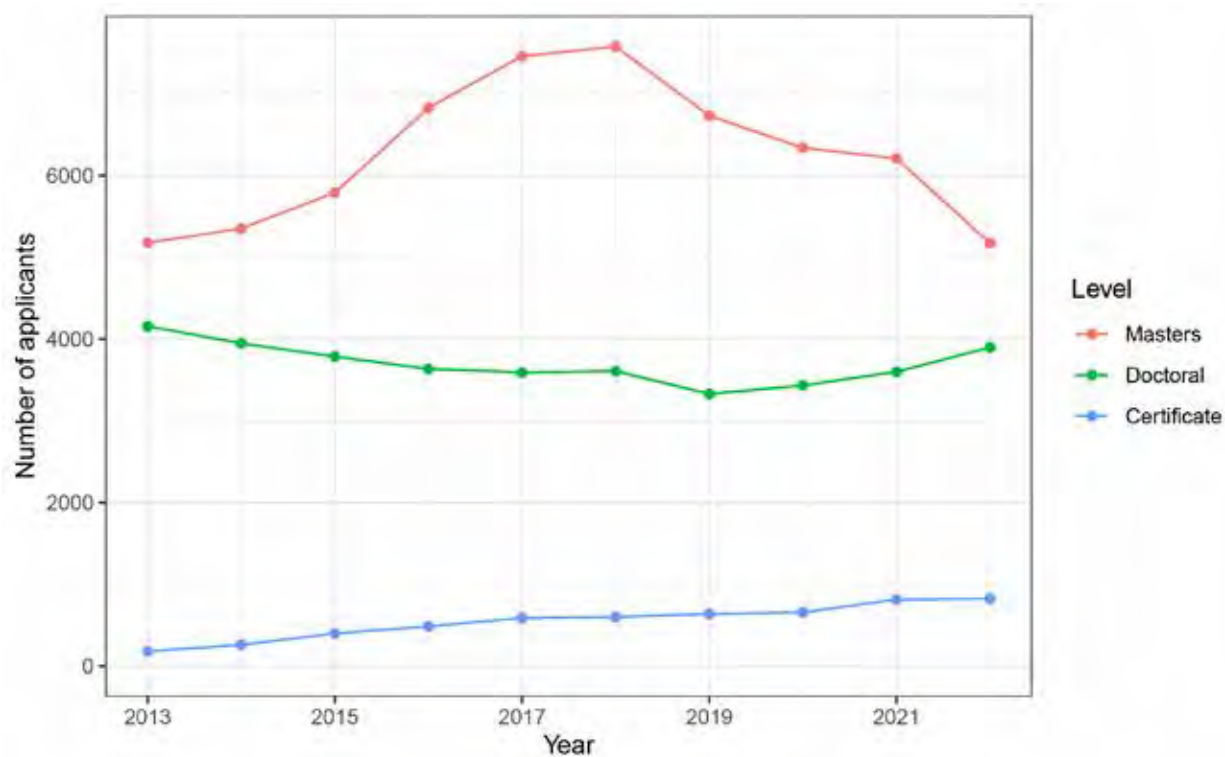


Figure 3. Applications by School

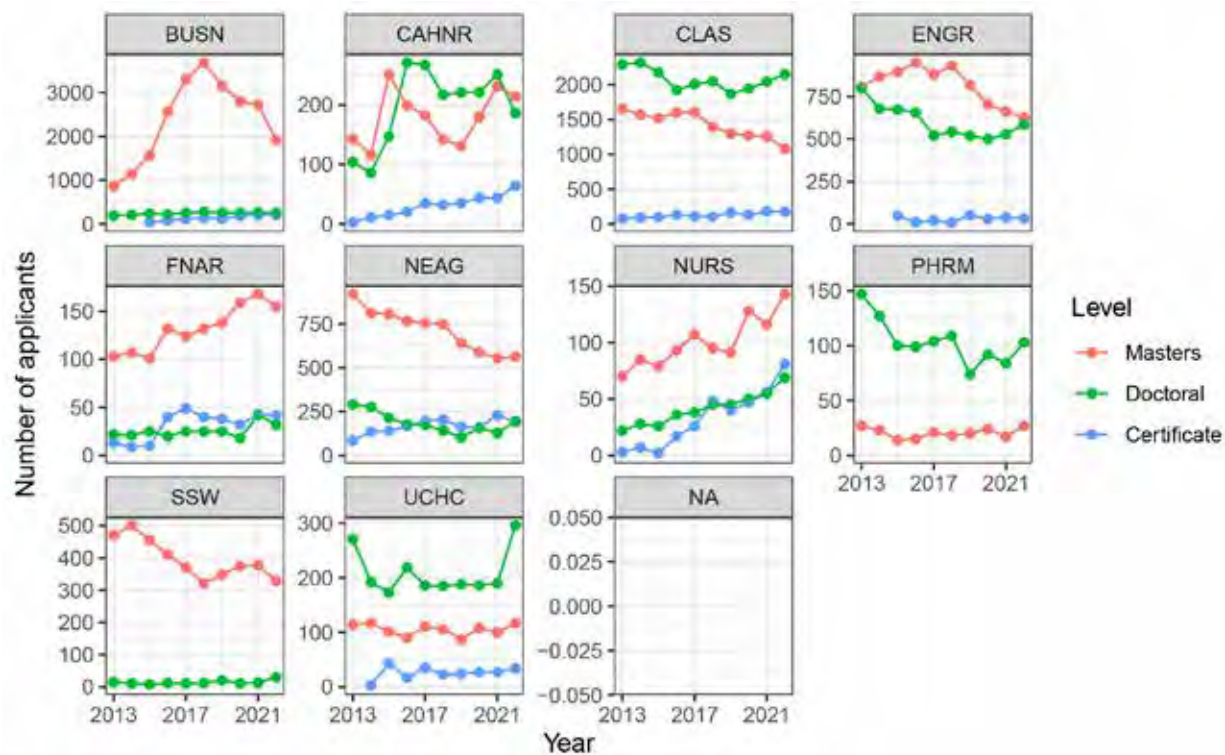
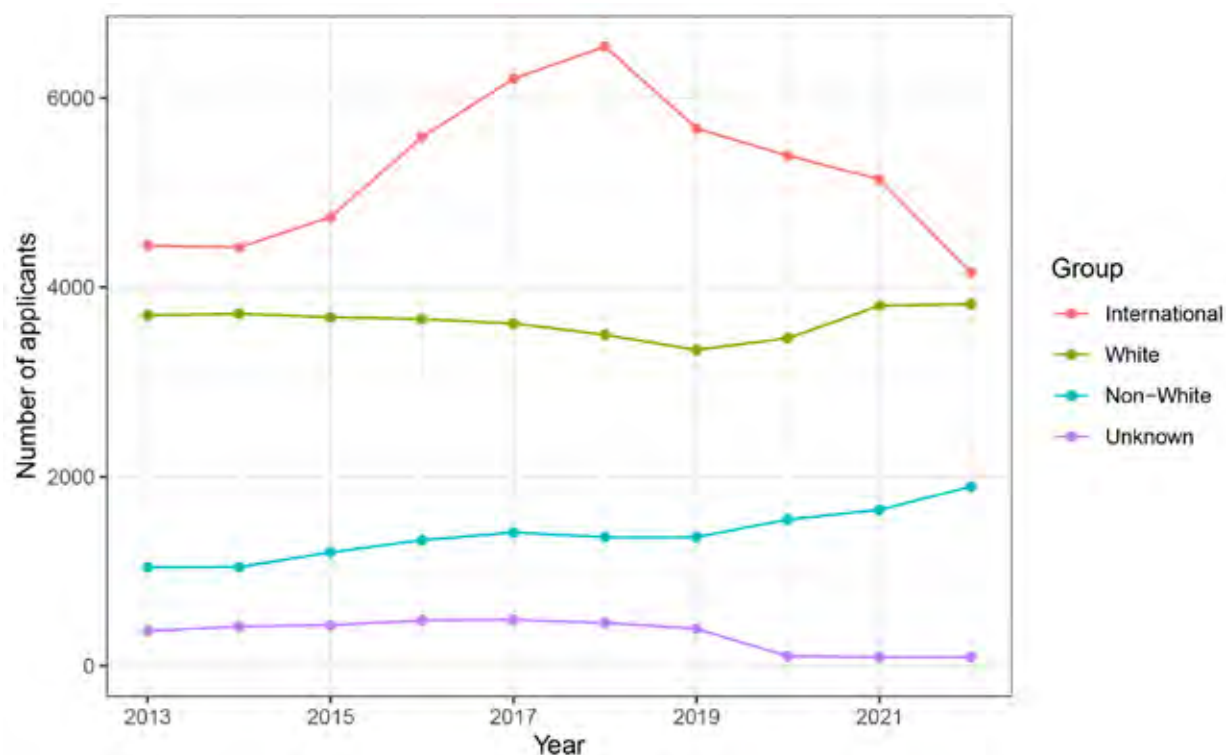


Figure 4. Applications by Race

Enrollment

Total enrollment of graduate students first exceeded 7000 in Fall 2016 (Figure 5). It climbed slightly to 7208 in Fall 2019 before declining slightly in Fall 2020 and Fall 2021. Enrollment in doctoral and master's programs has been relatively stable over the last five years, after a 16 percent increase in master's enrollment from Fall 2012 to Fall 2016. Enrollment in certificate programs has increased steadily over the last ten years at an average annual rate of nearly 13 percent.

Domestic students who self-identify as white make up the largest category of graduate students, and their number has increased in the last several years. Nonetheless, the number of domestic graduate students who self-identify as non-white has increased more rapidly. As a result, the proportion of graduate students who self-identify as white has decreased from 60 percent in 2012 to 53 percent while the proportion of those who self-identify as non-white increased from 16 percent to 24 percent. After climbing rapidly from Fall 2012 to Fall 2016, the number of international students remained

steady until a sharp drop in Fall 2020. Travel restrictions and visa delays associated with COVID-19 likely caused that decline in international enrollments. The proportion of international graduate students was 24 percent in Fall 2021, the same as it was in Fall 2012 in spite of an increase to 30 percent or more from Fall 2015 to Fall 2019. The continuing decline in applications from international students suggests that the number of international students enrolled at the University may continue to decline.

Figure 5. Enrollment

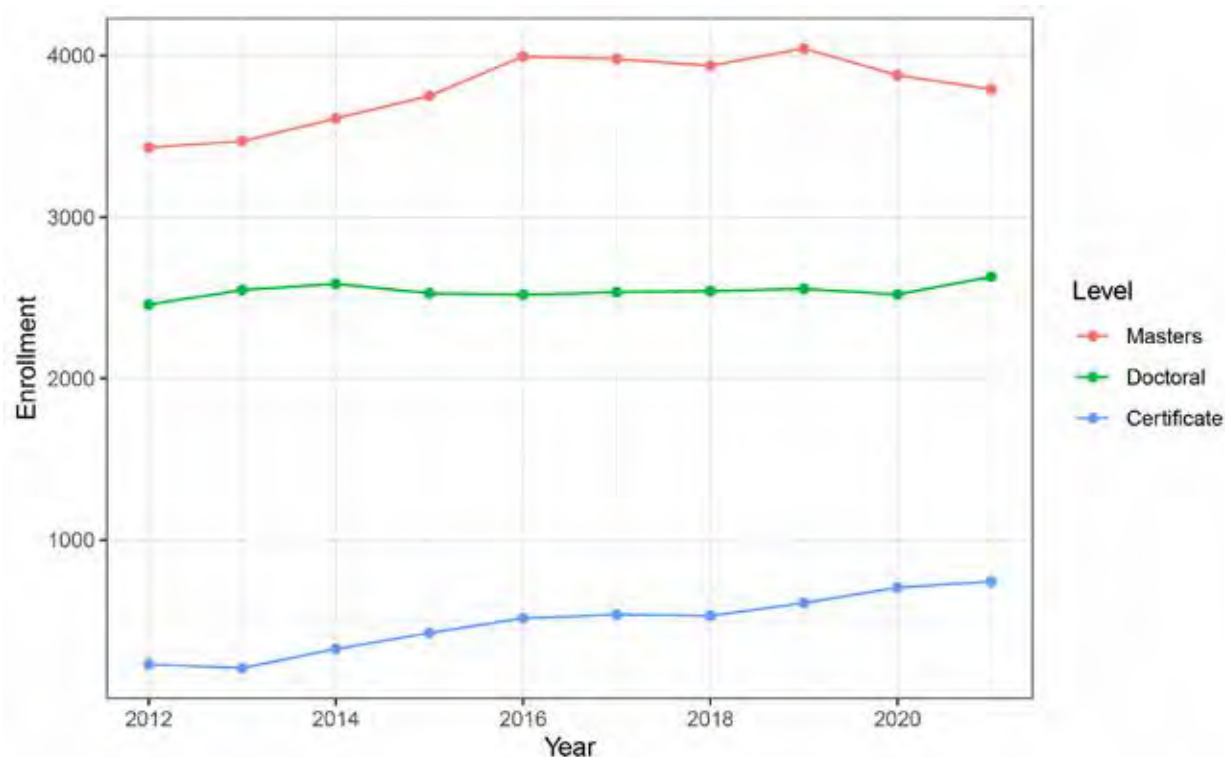
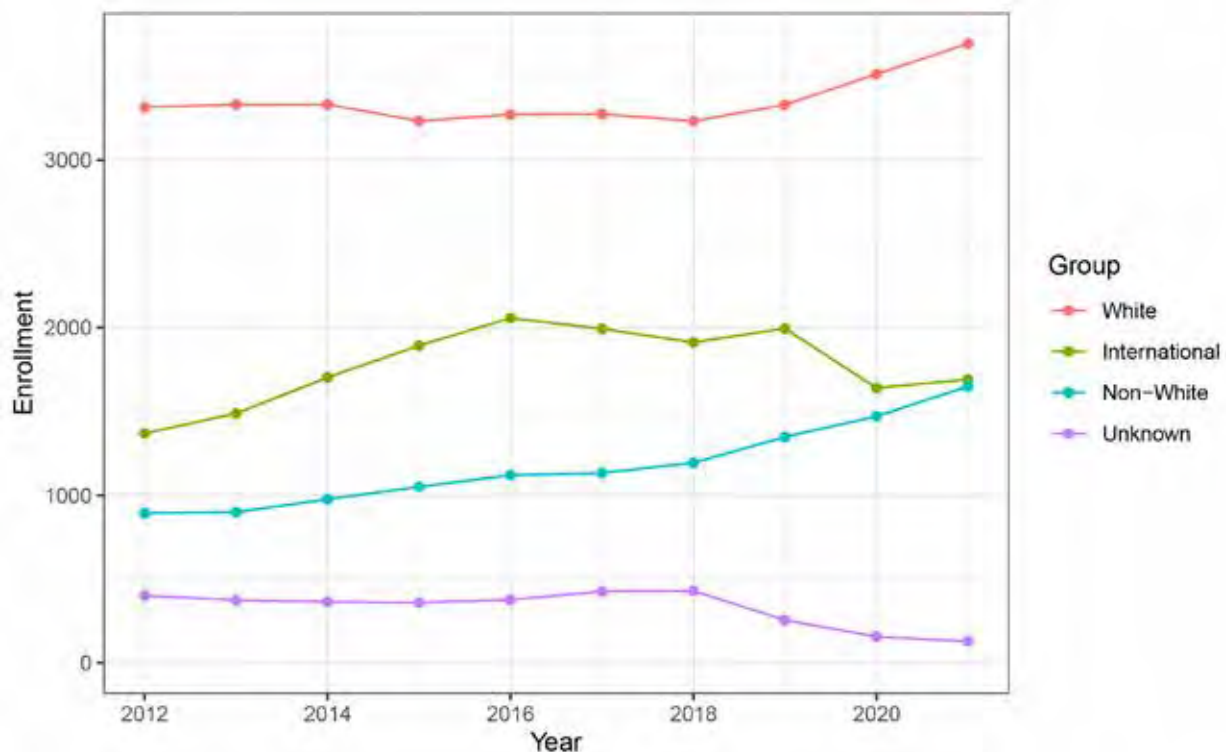


Figure 6. Enrollment by Race

Graduate Student Experience

The University of Connecticut is part of the [SERU Consortium](#), a group of leading research-intensive universities that collaborate on generating and interpreting longitudinal data on the graduate and undergraduate student experience in research universities. Institutional Research administered the [gradSERU survey](#) in Spring 2022. While analysis of the data has only begun, a few responses are worth noting.

The survey included several questions addressing the University's response to COVID-19. More than 80 percent of respondents were either satisfied or very satisfied with the University's response concerning (1) the way instruction was organized, (2) the efforts to protect health, (3) communication about responses, and (4) accommodations for conducting research. This overall positive assessment does, however, hide pockets of discontent within the University. Each dot in Figure 7 corresponds to one degree program, and in a number of degree programs fewer than half of respondents were satisfied with the way instruction was organized. Responses to the other questions showed a similar pattern. Notably, international students were more satisfied with the University response than domestic

students (data not shown). Non-white domestic students were less likely to find accommodations for research helpful than white domestic students, but the groups differed little in their assessment of other aspects of the University response.

With relatively few exceptions, graduate students are satisfied with the quality of instruction (Figure 8) and with their access to quality advising (Figure 9). As with the University response to COVID-19, a higher proportion of international graduate students are satisfied with the quality of instruction and the access to advising than domestic students (data not shown). Non-white domestic students are only slightly less likely to report that they are not satisfied with their access to quality advising than domestic white students.

Figure 7. COVID-19 The Way Instruction Was Organized

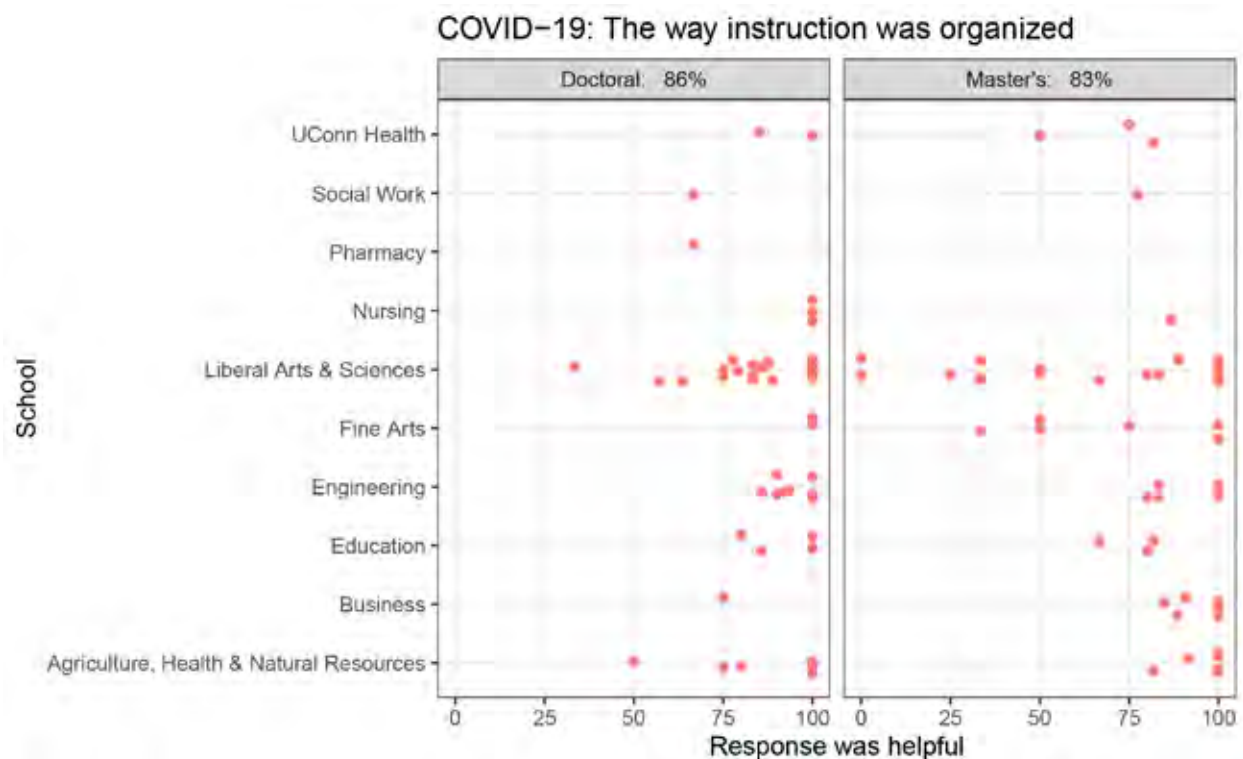


Figure 8. Quality of Instruction

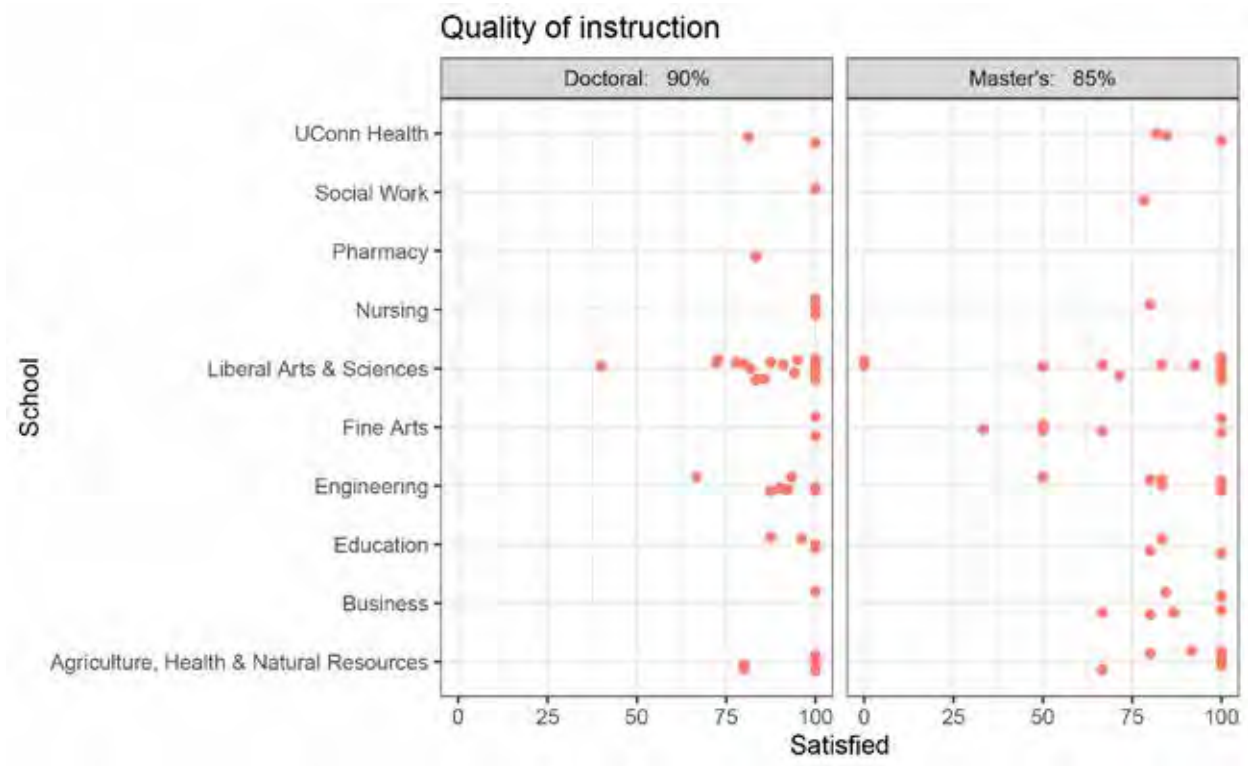
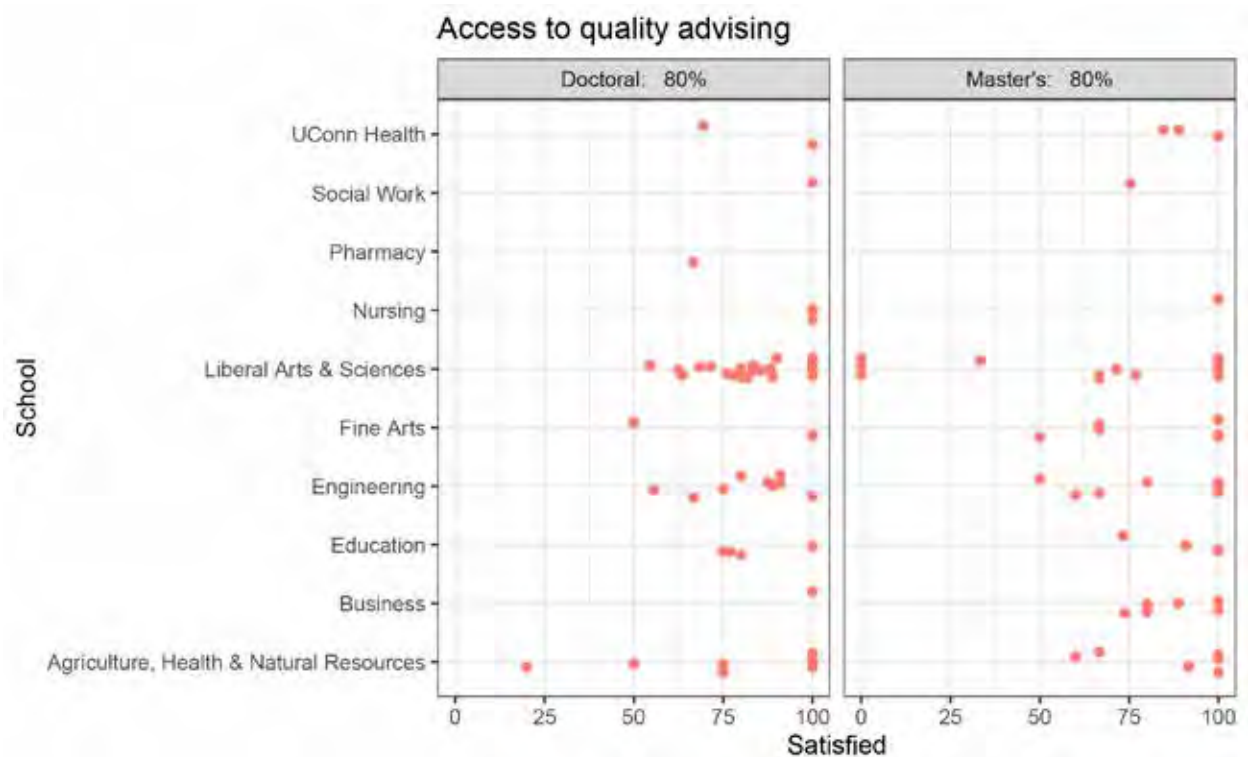


Figure 9. Access to Quality Advising



Degrees

The number of doctoral degrees awarded has remained relatively stable since 2012, rising only slightly from 341 in AY 2012 to 368 in AY 2021 (Figure 10). In 2021, the number of certificates awarded (458) exceeded the number of doctoral degrees (368) for the first time. While the number of master's degrees awarded remains below its peak in AY 2018, the two-year decline in the number of master's degrees awarded reversed in AY 2021.

Year-to-year variation in the total number of master's degrees arises largely from variation in the number of master's degrees awarded in the School of Business (Figure 11). The steady increase in the number of certificates awarded reflects increases across most schools and colleges.

Figure 10. Degrees

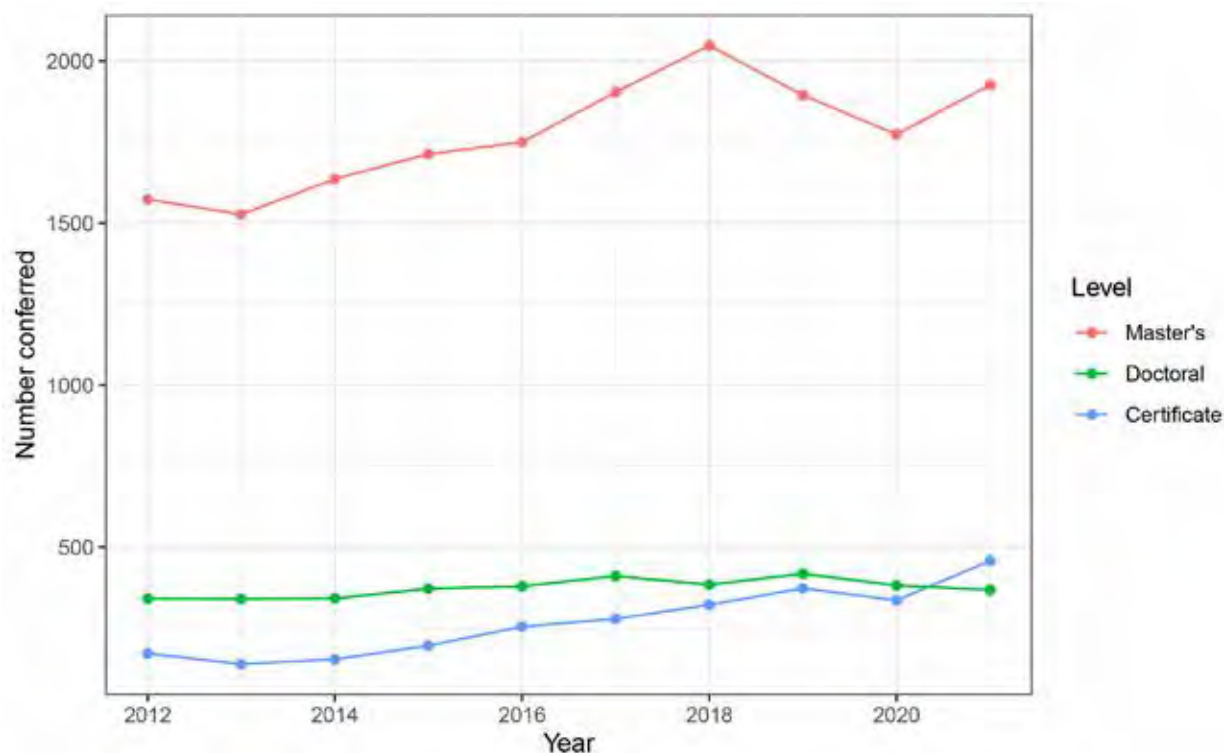
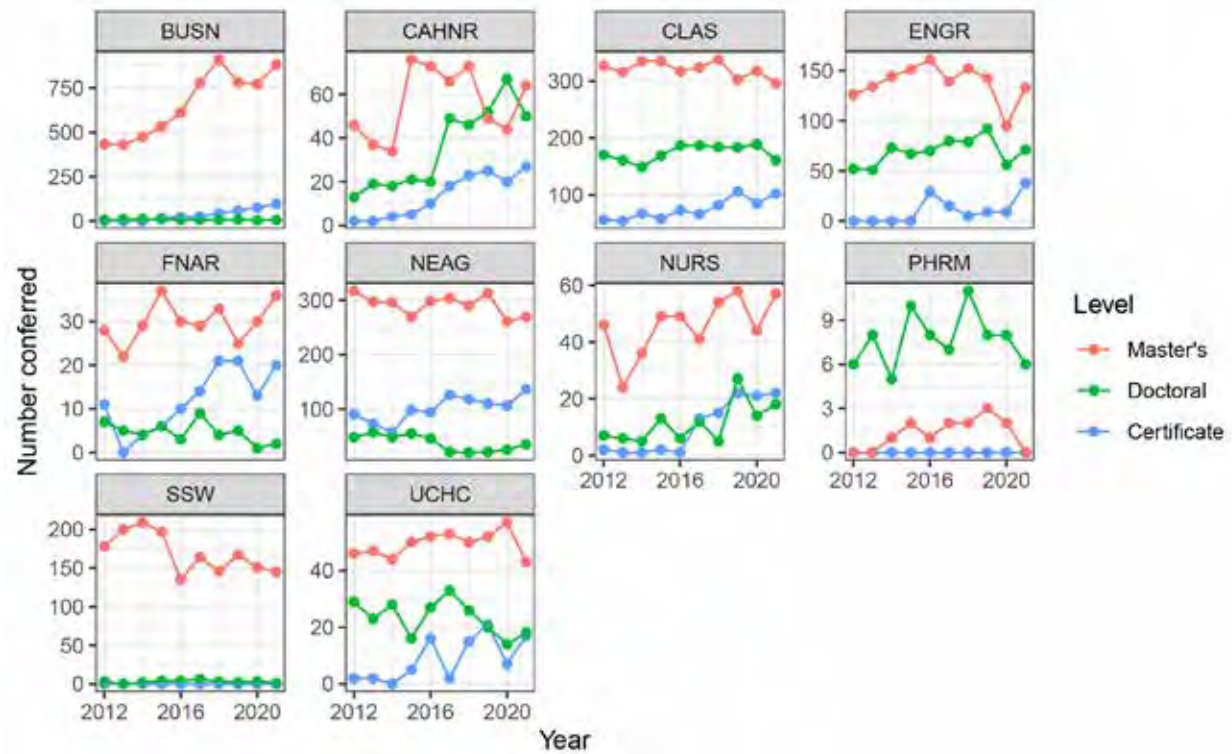


Figure 11. Degrees by School



APPENDIX

Admissions	17	Degrees	52
The Graduate School Summary	17	By Degree Level	52
Applications Received, by Race/Ethnicity	17	By School/College	52
CAHNR	18	By Race/Ethnicity	53
Business	19	CAHNR	54
Education.....	20	Business	54
Engineering	21	Center for Excellence in Teaching and Learning	54
Fine Arts	22	Education	55
CLAS	23	Engineering	55
Nursing	24	Fine Arts	55
Pharmacy	25	Liberal Arts & Sciences	56
Social Work	26	Nursing	56
UHC	27	Pharmacy	56
		Social Work	57
Enrollment	28	UHC	57
By Degree Level	28		
By School/College	28	New Degree and Certificate Programs.	58
By Race/Ethnicity	29		
By Country of Origin	30	Selected Activities	59
CAHNR	34	For Incoming International Students	59
Business	36	For Graduate and Postdoctoral Scholars	59
Education	38	Primarily for Postdoctoral Scholars.....	59
Engineering	40	Primarily for Graduate Students	59
Fine Arts	42	Programming in Collaboration with the Center for	
CLAS	44	Career Development	60
Nursing	46	Timely Topics	61
Pharmacy	48	Slate Training Events	62
Social Work	49	Slate CRM Activity.....	63
UHC	50	Diversity-focused Recruitment Events	64

Admissions

Admissions data include applications received in Summer, Fall, and Spring. For example, 2021-22 corresponds to applications for admission during Summer 2021, Fall 2021, and Spring 2022.

The Graduate School Summary of Applications Received by Academic Year (Summer - Fall - Spring)												
	2010-11	2011-12	2012-13	2013-14	2014-15	2015-16	2016-17	2017-18	2018-19	2019-20	2020-21	2021-22
Applications	9,336	9,136	9,558	9,602	10,058	11,061	11,718	11,859	10,769	10,502	10,690	9,967
Admissions	2,387	2,451	3,290	3,747	4,034	4,542	4,959	5,088	5,321	5,595	6,023	5,275
% Admitted	26%	27%	34%	39%	40%	41%	42%	43%	49%	53%	56%	53%
Enrolled	2,185	2,286	2,336	2,483	2,620	2,906	3,064	2,944	2,954	2,987	2,970	3,079
% Yield	92%	93%	71%	66%	65%	64%	62%	58%	56%	53%	49%	58%

Number of Applications Received, by Race/Ethnicity												
	2010-11	2011-12	2012-13	2013-14	2014-15	2015-16	2016-17	2017-18	2018-19	2019-20	2020-21	2021-22
Black	409	309	285	308	367	412	446	374	414	417	401	458
Hawaiian/ Pacific Islander		6	6	7	5	6	4	4	3	3	3	6
Latino	342	253	277	287	293	356	386	402	348	545	587	677
Native American	24	14	6	7	8	5	11	10	15	5	6	2
Multiracial URM	11	56	87	81	81	93	112	99	122	98	96	117
Subtotal URM	786	638	661	690	754	872	959	889	902	1,068	1,093	1,260
Multiracial Non-URM	2	23	49	40	67	56	52	57	52	73	74	90
Asian American	354	289	332	315	379	402	399	415	407	406	483	545
White	4,046	3,040	3,704	3,720	3,684	3,664	3,618	3,498	3,338	3,463	3,805	3,823
Unknown	389	1,283	371	416	432	481	486	458	393	103	93	93
International	3,759	3,863	4,441	4,421	4,742	5,586	6,204	6,542	5,677	5,389	5,142	4,156
Subtotal Non-URM	8,550	8,498	8,897	8,912	9,304	10,189	10,759	10,970	9,867	9,434	9,597	8,707
Total	9,336	9,136	9,558	9,602	10,058	11,061	11,718	11,859	10,769	10,502	10,690	9,967

CAHNR

Summary of Applications Received by Academic Year (Summer - Fall - Spring)

	2010-11	2011-12	2012-13	2013-14	2014-15	2015-16	2016-17	2017-18	2018-19	2019-20	2020-21	2021-22
Overall												
Applications	236	253	250	213	413	490	484	391	387	445	526	464
Admissions	108	128	135	138	190	195	239	208	238	286	319	339
% Admitted	66	72	77	84	164	125	160	134	157	189	218	236
Enrolled	46%	51%	54%	65%	46%	40%	49%	53%	61%	64%	61%	73%
% Yield	61%	56%	57%	61%	86%	64%	67%	64%	66%	66%	68%	70%
Graduate Certificate												
Applications	6	6	3	11	15	20	35	32	35	44	44	64
Admissions	5	4	3	11	15	17	35	24	27	38	38	61
% Admitted	2	5	2	6	13	15	23	24	27	30	32	52
Enrolled	83%	67%	100%	100%	100%	85%	100%	75%	77%	86%	86%	95%
% Yield	40%	125%	67%	55%	87%	88%	66%	100%	100%	79%	84%	85%
Master's												
Applications	135	143	143	116	251	199	182	142	131	180	231	214
Admissions	57	79	74	81	117	74	93	68	81	131	160	161
% Admitted	35	46	46	59	89	51	71	47	61	93	118	118
Enrolled	42%	55%	52%	70%	47%	37%	51%	48%	62%	73%	69%	75%
% Yield	61%	58%	62%	73%	76%	69%	76%	69%	75%	71%	74%	73%
Doctoral												
Applications	95	104	104	86	147	271	267	217	221	221	251	186
Admissions	46	45	58	46	58	104	111	116	130	117	121	117
% Admitted	29	21	29	19	62	59	66	63	69	66	68	66
Enrolled	48%	43%	56%	53%	39%	38%	42%	53%	59%	53%	48%	63%
% Yield	63%	47%	50%	41%	107%	57%	59%	54%	53%	56%	56%	56%

Business

Summary of Applications Received by Academic Year (Summer - Fall - Spring)

	2010-11	2011-12	2012-13	2013-14	2014-15	2015-16	2016-17	2017-18	2018-19	2019-20	2020-21	2021-22
Overall												
Applications	1,247	1,014	1,057	1,357	1,847	2,868	3,670	4,105	3,539	3,239	3,180	2,372
Admissions	152	221	446	709	997	1,529	1,748	1,929	2,038	2,160	2,225	1,590
% Admitted	444	482	415	548	705	1,051	1,136	1,000	1,009	1,012	808	880
Enrolled	12%	22%	42%	52%	54%	53%	48%	47%	58%	67%	70%	67%
% Yield	292%	218%	93%	77%	71%	69%	65%	52%	50%	47%	36%	55%
Graduate Certificate												
Applications	n/a	n/a	n/a	n/a	41	80	114	137	121	185	195	206
Admissions	n/a	n/a	n/a	n/a	37	57	98	129	112	163	179	193
% Admitted	n/a	n/a	n/a	n/a	32	37	82	93	85	104	118	140
Enrolled	n/a	n/a	n/a	n/a	90%	71%	86%	94%	93%	88%	92%	94%
% Yield	n/a	n/a	n/a	n/a	86%	65%	84%	72%	76%	64%	66%	73%
Master's												
Applications	1,003	877	865	1,149	1,567	2,568	3,302	3,689	3,157	2,801	2,723	1917
Admissions	143	216	432	696	952	1,452	1,627	1,774	1,908	1,973	2,021	1375
% Admitted	431	475	403	539	666	1,003	1,041	894	914	897	681	728
Enrolled	14%	25%	50%	61%	61%	57%	49%	48%	60%	70%	74%	72%
% Yield	301%	220%	93%	77%	70%	69%	64%	50%	48%	45%	34%	53%
Doctoral												
Applications	244	137	192	208	239	220	254	279	261	253	262	249
Admissions	9	5	14	13	8	20	23	26	18	24	25	22
% Admitted	13	7	12	9	7	11	13	13	10	11	9	12
Enrolled	4%	4%	7%	6%	3%	9%	9%	9%	7%	9%	10%	9%
% Yield	144%	140%	86%	69%	88%	55%	57%	50%	56%	46%	36%	55%

Education

Summary of Applications Received by Academic Year (Summer - Fall - Spring)

	2010-11	2011-12	2012-13	2013-14	2014-15	2015-16	2016-17	2017-18	2018-19	2019-20	2020-21	2021-22
Overall												
Applications	1,334	1,231	1,297	1,223	1,163	1,113	1,127	1,095	906	905	911	949
Admissions	405	386	448	594	555	568	616	637	532	553	645	621
% Admitted	415	440	522	462	416	450	455	480	404	409	481	474
Enrolled	30%	31%	35%	49%	48%	51%	55%	58%	59%	61%	71%	65%
% Yield	102%	114%	117%	78%	75%	79%	74%	75%	76%	74%	75%	76%
Graduate Certificate / Sixth-Year Diploma												
Applications	117	106	85	135	141	168	197	205	163	159	229	190
Admissions	98	79	76	113	115	133	174	185	143	137	236	158
% Admitted	68	82	79	87	83	105	111	111	105	118	188	126
Enrolled	84%	75%	89%	84%	82%	79%	88%	90%	88%	86%	103%	83%
% Yield	69%	104%	104%	77%	72%	79%	64%	60%	73%	86%	80%	80%
Master's												
Applications	910	867	921	812	807	768	755	748	641	588	554	564
Admissions	210	207	276	367	356	362	361	386	348	331	354	365
% Admitted	283	289	337	294	299	297	302	319	283	250	262	282
Enrolled	23%	24%	30%	45%	44%	47%	48%	52%	54%	56%	64%	65%
% Yield	135%	140%	122%	80%	84%	82%	84%	83%	81%	76%	74%	77%
Doctoral												
Applications	307	258	291	276	215	177	175	142	102	158	128	195
Admissions	97	100	96	114	84	73	81	66	41	85	55	98
% Admitted	64	69	106	81	34	48	42	50	16	41	31	66
Enrolled	32%	39%	33%	41%	39%	41%	46%	46%	40%	54%	43%	50%
% Yield	66%	69%	110%	71%	40%	66%	52%	76%	39%	48%	56%	67%

Engineering

Summary of Applications Received by Academic Year (Summer - Fall - Spring)

	2010-11	2011-12	2012-13	2013-14	2014-15	2015-16	2016-17	2017-18	2018-19	2019-20	2020-21	2021-22
Overall												
Applications	1,424	1,490	1,603	1,547	1,618	1,616	1,420	1,483	1,390	1,233	1,230	1,243
Admissions	460	400	519	565	563	490	405	405	453	453	574	583
% Admitted	253	242	279	327	343	281	235	276	315	293	308	301
Enrolled	32%	27%	32%	37%	35%	30%	29%	27%	33%	37%	47%	47%
% Yield	55%	61%	54%	58%	61%	57%	58%	68%	70%	65%	54%	52%
Graduate Certificate												
Applications	n/a	n/a	n/a	n/a	49	10	20	9	52	30	39	32
Admissions	n/a	n/a	n/a	n/a	32	23	16	12	46	23	38	28
% Admitted	n/a	n/a	n/a	n/a	26	23	16	11	45	19	32	22
Enrolled	n/a	n/a	n/a	n/a	65%	230%	80%	133%	88%	77%	97%	88%
% Yield	n/a	n/a	n/a	n/a	81%	100%	100%	92%	98%	83%	84%	79%
Master's												
Applications	646	730	805	868	896	950	880	931	818	703	663	625
Admissions	217	212	265	321	300	262	203	220	216	201	304	316
% Admitted	128	137	158	194	185	150	121	156	150	142	173	152
Enrolled	34%	29%	33%	37%	33%	28%	23%	24%	26%	29%	46%	51%
% Yield	59%	65%	60%	60%	62%	57%	60%	71%	69%	71%	57%	48%
Doctoral												
Applications	778	760	798	679	673	656	520	543	520	500	528	586
Admissions	243	188	254	244	231	205	186	173	191	229	232	239
% Admitted	125	105	121	133	132	108	98	109	120	132	103	127
Enrolled	31%	25%	32%	36%	34%	31%	36%	32%	37%	46%	44%	41%
% Yield	51%	56%	48%	55%	57%	53%	53%	63%	63%	58%	44%	53%

Fine Arts												
Summary of Applications Received by Academic Year (Summer - Fall - Spring)												
	2010-11	2011-12	2012-13	2013-14	2014-15	2015-16	2016-17	2017-18	2018-19	2019-20	2020-21	2021-22
Overall												
Applications	161	183	138	137	136	192	198	197	201	209	253	229
Admissions	35	65	55	57	62	84	110	92	100	95	136	111
% Admitted	40	56	39	36	57	55	68	69	63	58	79	62
Enrolled	22%	36%	40%	42%	46%	44%	56%	47%	50%	45%	54%	48%
% Yield	114%	86%	71%	63%	92%	65%	62%	75%	63%	61%	58%	56%
Graduate Certificate												
Applications	12	13	13	9	10	40	49	40	38	32	43	42
Admissions	5	10	9	6	9	35	48	36	34	29	41	38
% Admitted	4	11	6	4	7	22	37	26	26	23	31	22
Enrolled	42%	77%	69%	67%	90%	88%	98%	90%	89%	91%	95%	90%
% Yield	80%	110%	67%	67%	78%	63%	77%	72%	76%	79%	76%	58%
Master's												
Applications	122	138	103	107	101	132	124	132	138	159	168	155
Admissions	21	46	37	43	45	45	51	47	55	57	68	51
% Admitted	28	41	29	30	45	31	28	39	30	32	41	33
Enrolled	17%	33%	36%	40%	45%	34%	41%	36%	40%	36%	40%	33%
% Yield	133%	89%	78%	70%	100%	69%	55%	83%	55%	56%	60%	65%
Doctoral												
Applications	27	32	22	21	25	20	25	25	25	18	42	32
Admissions	9	9	9	8	8	4	11	9	11	9	27	22
% Admitted	8	4	4	2	5	2	3	4	7	3	7	7
Enrolled	33%	28%	41%	38%	32%	20%	44%	36%	44%	50%	64%	69%
% Yield	89%	44%	44%	25%	63%	50%	27%	44%	64%	33%	26%	32%

CLAS

Summary of Applications Received by Academic Year (Summer - Fall - Spring)

	2010-11	2011-12	2012-13	2013-14	2014-15	2015-16	2016-17	2017-18	2018-19	2019-20	2020-21	2021-22
Overall												
Applications	3,705	3,760	4,028	3,986	3,796	3,659	3,731	3,552	3,335	3,349	3,484	3,408
Admissions	869	874	1,159	1,123	1,166	1,185	1,266	1,288	1,395	1,428	1,450	1,316
% Admitted	589	588	565	616	551	581	573	584	599	585	605	630
Enrolled	23%	23%	29%	28%	31%	32%	34%	36%	42%	43%	42%	39%
% Yield	68%	67%	49%	55%	47%	49%	45%	45%	43%	41%	42%	48%
Graduate Certificate												
Applications	65	80	77	93	98	132	113	107	164	133	180	174
Admissions	19	19	70	70	87	118	104	103	153	119	177	161
% Admitted	43	64	49	55	62	83	58	64	97	86	118	120
Enrolled	29%	24%	91%	75%	89%	89%	92%	96%	93%	89%	98%	93%
% Yield	226%	337%	70%	79%	71%	70%	56%	62%	63%	72%	67%	75%
Master's												
Applications	1,399	1,513	1,658	1,573	1,519	1,602	1,607	1,395	1,300	1,273	1,258	1082
Admissions	429	448	569	516	572	570	606	574	661	704	749	574
% Admitted	270	277	256	272	253	280	266	262	265	271	274	277
Enrolled	31%	30%	34%	33%	38%	36%	38%	41%	51%	55%	60%	53%
% Yield	63%	62%	45%	53%	44%	49%	44%	46%	40%	38%	37%	48%
Doctoral												
Applications	2,241	2,167	2,293	2,320	2,179	1,925	2,011	2,050	1,871	1,943	2,046	2152
Admissions	421	407	520	537	507	497	556	611	581	605	524	581
% Admitted	276	247	260	289	236	218	249	258	237	228	213	233
Enrolled	19%	19%	23%	23%	23%	26%	28%	30%	31%	31%	26%	27%
% Yield	66%	61%	50%	54%	47%	44%	45%	42%	41%	38%	41%	40%

Nursing
Summary of Applications Received by Academic Year (Summer - Fall - Spring)

	2010-11	2011-12	2012-13	2013-14	2014-15	2015-16	2016-17	2017-18	2018-19	2019-20	2020-21	2021-22
Overall												
Applications	75	83	95	120	107	146	171	188	176	225	227	293
Admissions	10	20	78	74	88	93	129	117	136	136	160	204
% Admitted	37	45	69	59	74	80	106	96	108	123	124	175
Enrolled	13%	24%	82%	62%	82%	64%	75%	62%	77%	60%	70%	70%
% Yield	370%	225%	88%	80%	84%	86%	82%	82%	79%	90%	78%	86%
Graduate Certificate / Post-Master's Certificate												
Applications	1	4	3	7	2	17	26	48	40	47	56	81
Admissions	1	0	2	2	2	14	27	38	35	35	57	67
% Admitted	1	2	1	1	2	13	24	26	25	27	41	53
Enrolled	100%	0%	67%	29%	100%	82%	104%	79%	88%	74%	102%	83%
% Yield	100%	0%	50%	50%	100%	93%	89%	68%	71%	77%	72%	79%
Master's												
Applications	44	60	70	85	79	93	107	95	91	128	116	143
Admissions	4	15	57	47	61	55	72	41	61	68	61	88
% Admitted	20	33	48	37	47	47	58	37	53	62	49	88
Enrolled	9%	25%	81%	55%	77%	59%	67%	43%	67%	53%	53%	62%
% Yield	500%	220%	84%	79%	77%	85%	81%	90%	87%	91%	80%	100%
Doctoral												
Applications	30	19	22	28	26	36	38	45	45	50	55	69
Admissions	5	5	19	25	25	24	30	38	40	33	42	49
% Admitted	16	10	20	21	25	20	24	33	30	34	34	34
Enrolled	17%	26%	86%	89%	96%	67%	79%	84%	89%	66%	76%	71%
% Yield	320%	200%	105%	84%	100%	83%	80%	87%	75%	103%	81%	69%

Pharmacy
Summary of Applications Received by Academic Year (Summer - Fall - Spring)

	2010-11	2011-12	2012-13	2013-14	2014-15	2015-16	2016-17	2017-18	2018-19	2019-20	2020-21	2021-22
Overall												
Applications	183	172	174	150	114	114	125	127	94	116	101	130
Admissions	7	18	8	14	8	11	12	7	8	16	18	26
% Admitted	8	16	15	13	7	8	10	5	7	12	9	12
Enrolled	4%	10%	5%	9%	7%	10%	10%	6%	9%	14%	18%	20%
% Yield	114%	89%	188%	93%	88%	73%	83%	71%	88%	75%	50%	46%
Master's												
Applications	56	65	27	23	14	15	21	18	20	24	17	27
Admissions	0	1	0	1	0	0	1	0	1	0	1	0
% Admitted	0	1	1	2		2	1		1	0	0	0
Enrolled	0%	2%	0%	4%	0%	0%	5%	0%	5%	0%	6%	0%
% Yield	0%	100%	0%	200%	0%	0%	100%	0%	100%	0%	0%	0%
Doctoral												
Applications	127	107	147	127	100	99	104	109	74	92	84	103
Admissions	7	17	8	13	8	11	11	7	7	16	17	26
% Admitted	8	15	14	11	7	6	9	5	6	12	9	12
Enrolled	6%	16%	5%	10%	8%	11%	11%	6%	9%	17%	20%	25%
% Yield	114%	88%	175%	85%	88%	55%	82%	71%	86%	75%	53%	46%

Social Work												
Summary of Applications Received by Academic Year (Summer - Fall - Spring)												
	2010-11	2011-12	2012-13	2013-14	2014-15	2015-16	2016-17	2017-18	2018-19	2019-20	2020-21	2021-22
Overall												
Applications	517	510	486	512	463	423	382	333	369	386	390	358
Admissions	310	303	317	326	249	261	289	249	280	315	338	300
% Admitted	214	226	231	232	169	161	179	159	170	180	224	171
Enrolled	60%	59%	65%	64%	54%	62%	76%	75%	76%	82%	87%	84%
% Yield	69%	75%	73%	71%	68%	62%	62%	64%	61%	57%	66%	57%
Master's												
Applications	505	490	471	501	455	411	371	321	348	375	377	328
Admissions	305	297	311	321	245	255	285	245	271	309	332	295
% Admitted	209	220	226	228	166	157	176	156	165	176	221	167
Enrolled	60%	61%	66%	64%	54%	62%	77%	76%	78%	82%	88%	90%
% Yield	69%	74%	73%	71%	68%	62%	62%	64%	61%	57%	67%	57%
Doctoral												
Applications	12	20	15	11	8	12	11	12	21	11	13	30
Admissions	5	6	6	5	4	6	4	4	9	6	6	5
% Admitted	5	6	5	4	3	4	3	3	5	4	3	4
Enrolled	42%	30%	40%	45%	50%	50%	36%	33%	43%	55%	46%	17%
% Yield	100%	100%	83%	80%	75%	67%	75%	75%	56%	67%	50%	80%

UHC												
Summary of Applications Received by Academic Year (Summer - Fall - Spring)												
	2010-11	2011-12	2012-13	2013-14	2014-15	2015-16	2016-17	2017-18	2018-19	2019-20	2020-21	2021-22
Overall												
Applications	382	358	385	312	317	326	332	314	299	321	317	447
Admissions	25	26	97	108	120	104	128	126	114	134	134	157
% Admitted	79	72	99	82	103	86	101	98	96	109	101	121
Enrolled	7%	7%	25%	35%	38%	32%	39%	40%	38%	42%	42%	35%
% Yield	316%	277%	102%	76%	86%	83%	79%	78%	84%	81%	75%	77%
Graduate Certificate												
Applications	5	0	0	3	43	17	35	23	24	27	27	34
Admissions	0	0	0	3	25	17	19	18	16	24	19	25
% Admitted	5			3	17	17	17	11	16	21	17	16
Enrolled	0%	0%	0%	100%	58%	100%	54%	78%	67%	89%	70%	74%
% Yield	0%	0%	0%	100%	68%	100%	89%	61%	100%	88%	89%	64%
Master's												
Applications	130	114	114	117	101	90	111	106	87	108	100	117
Admissions	19	25	71	77	72	66	83	77	66	79	71	102
% Admitted	46	48	63	51	59	46	59	59	48	57	47	72
Enrolled	15%	22%	62%	66%	71%	73%	75%	73%	76%	73%	71%	87%
% Yield	242%	192%	89%	66%	82%	70%	71%	77%	73%	72%	66%	71%
Doctoral												
Applications	247	244	271	192	173	219	186	185	188	186	190	296
Admissions	6	1	26	28	23	21	26	31	32	31	44	30
% Admitted	28	24	36	28	27	23	25	28	32	31	37	33
Enrolled	2%	0%	10%	15%	13%	10%	14%	17%	17%	17%	23%	10%
% Yield	467%	2400%	138%	100%	117%	110%	96%	90%	100%	100%	84%	110%

Enrollment

Enrollment data reflect enrollments at the Fall census snapshot, i.e., the 10th day of classes in each fall semester.

10th Day Enrollment Census by Degree Level												
	Fall 2010	Fall 2011	Fall 2012	Fall 2013	Fall 2014	Fall 2015	Fall 2016	Fall 2017	Fall 2018	Fall 2019	Fall 2020	Fall 2021
Certificate/ 6th-Year Diploma	236	233	228	206	324	423	515	537	529	609	705	742
Masters	3,518	3,461	3,431	3,470	3,611	3,751	3,995	3,980	3,938	4,044	3,879	3,792
Doctoral	2,393	2,412	2,458	2,548	2,586	2,528	2,519	2,535	2,542	2,555	2,521	2,630
Total	6,147	6,106	6,117	6,224	6,521	6,702	7,029	7,052	7,009	7,208	7,105	7,164

10th Day Enrollment Census by School/College												
	Fall 2010	Fall 2011	Fall 2012	Fall 2013	Fall 2014	Fall 2015	Fall 2016	Fall 2017	Fall 2018	Fall 2019	Fall 2020	Fall 2021
CAHNR	197	201	207	206	372	361	360	361	361	400	433	507
Business	1,378	1,280	1,244	1,237	1,433	1,766	2,110	2,151	2,116	2,237	1,967	1,796
CLAS	1,858	1,873	1,892	1,893	1,904	1,866	1,858	1,843	1,829	1,839	1,811	1,868
CETL*	114	118	106	84	74	21	28	29	40	0	0	0
Education	824	816	818	806	700	712	744	772	706	746	750	775
Engineering	683	700	736	846	891	903	830	813	844	882	943	955
Fine Arts	125	135	122	114	114	117	137	131	133	131	144	134
Nursing	187	164	159	187	206	198	227	238	254	269	290	325
Pharmacy	46	53	52	57	53	51	52	43	37	39	39	41
Social Work	405	444	463	483	416	358	346	342	344	323	378	391
UCHC	330	322	318	311	358	349	337	329	345	342	350	372
Total	6,147	6,106	6,117	6,224	6,521	6,702	7,029	7,052	7,009	7,208	7,105	7,164

10th Day Enrollment Census by Race/Ethnicity												
	Fall 2010	Fall 2011	Fall 2012	Fall 2013	Fall 2014	Fall 2015	Fall 2016	Fall 2017	Fall 2018	Fall 2019	Fall 2020	Fall 2021
Black	301	296	279	269	284	306	345	337	348	376	405	417
Hawaiian/Pacific Islander	0	2	2	5	5	5	5	7	7	6	4	3
Latino	273	253	253	268	265	293	314	348	360	428	517	632
Native American	16	21	13	11	12	8	6	4	11	6	6	3
Multiracial URM	0	22	30	36	53	56	64	64	74	78	80	96
Subtotal URM	590	594	577	589	619	668	734	760	800	894	1,012	1,151
Multiracial Non-URM	0	9	27	28	36	43	60	52	60	63	71	74
Asian American	296	297	290	282	322	340	326	321	334	391	388	425
White	3,644	3,375	3,314	3,330	3,331	3,233	3,271	3,274	3,232	3,329	3,512	3,694
Unknown	303	444	402	375	364	360	377	427	430	256	157	129
International	1,190	1,255	1,370	1,488	1,703	1,893	2,057	1,993	1,912	1,995	1,640	1,691
Subtotal Non-URM	5,433	5,380	5,403	5,503	5,756	5,869	6,091	6,067	5,968	6,034	5,768	6,013
Total	6,147	6,106	6,117	6,224	6,521	6,702	7,029	7,052	7,009	7,208	6,780	7,164

Notes:

- Degree Level and School/College tables reflect duplicated enrollment counts. Students enrolled concurrently in more than one field of study are counted in each field of study. Students enrolled at two degree levels within a single field of study are counted only once, at the highest degree level. Racial Group table reflects unduplicated enrollment counts.
- Excludes non-degree students.
- Humanities Institute and CLAS/UCHC interdisciplinary programs are included in the CLAS counts. The OEP pre-med graduate certificate is included in the UCHC counts.
- Asian students are not considered an underrepresented minority group. Thus, multiracial students identifying as white/asian are also not considered underrepresented minority.
- Hawaiian/Pacific Islander and Multiracial were not federally reportable categories until 2010, so this data was not collected in prior years.

By Country of Origin

Fall 2010				Fall 2011				Fall 2012			
Country	count	% of intl.	cum. %	Country	count	% of intl.	cum. %	Country	count	% of intl.	cum. %
China	401	33.7%	33.7%	China	451	35.9%	35.9%	China	539	39.3%	39.3%
India	234	19.7%	53.4%	India	233	18.6%	54.5%	India	249	18.2%	57.5%
Korea, Republic of	46	3.9%	57.2%	Korea, Republic of	57	4.5%	59.0%	Korea, Republic of	56	4.1%	61.6%
Taiwan, Province of China	43	3.6%	60.8%	Taiwan, Province of China	41	3.3%	62.3%	Iran (Islamic Republic Of)	46	3.4%	65.0%
Turkey	39	3.3%	64.1%	Turkey	41	3.3%	65.6%	Turkey	40	2.9%	67.9%
Iran (Islamic Republic Of)	36	3.0%	67.1%	Iran (Islamic Republic Of)	34	2.7%	68.3%	Taiwan, Province of China	36	2.6%	70.5%
Sri Lanka	28	2.4%	69.5%	Sri Lanka	30	2.4%	70.7%	Sri Lanka	31	2.3%	72.8%
Colombia	21	1.8%	71.3%	Colombia	18	1.4%	72.1%	Saudi Arabia	26	1.9%	74.7%
Canada	16	1.3%	72.6%	Saudi Arabia	18	1.4%	73.5%	Bangladesh	21	1.5%	76.2%
Japan	15	1.3%	73.9%	Canada	15	1.2%	74.7%	Nepal	18	1.3%	77.5%
Nepal	13	1.1%	75.0%	Nepal	15	1.2%	75.9%	Canada	17	1.2%	78.8%
Italy	13	1.1%	76.1%	Kenya	15	1.2%	77.1%	Egypt	15	1.1%	79.9%
Russian Federation	12	1.0%	77.1%	Italy	14	1.1%	78.2%	Colombia	15	1.1%	80.9%
Nigeria	12	1.0%	78.1%	Bangladesh	14	1.1%	79.4%	Japan	15	1.1%	82.0%
Philippines	12	1.0%	79.1%	Japan	13	1.0%	80.4%	Spain	14	1.0%	83.1%
Kenya	12	1.0%	80.1%	Viet Nam	12	1.0%	81.4%	Other (69)	232	16.9%	100.0%
Other (70)	237	19.9%	100.0%	Other (73)	234	18.6%	100.0%				
Total	1,190			Total	1,255			Total	1,370		

By Country of Origin (Continued)

Fall 2013				Fall 2014				Fall 2015			
Country	count	% of intl.	cum. %	Country	count	% of intl.	cum. %	Country	count	% of intl.	cum. %
China	650	43.7%	43.7%	China	796	46.7%	46.7%	China	884	46.7%	46.7%
India	253	17.0%	60.7%	India	325	19.1%	65.8%	India	416	22.0%	68.7%
Korea, Republic of	65	4.4%	65.1%	Korea, Republic of	62	3.6%	69.5%	Iran (Islamic Republic Of)	58	3.1%	71.7%
Iran (Islamic Republic Of)	55	3.7%	68.8%	Iran (Islamic Republic Of)	55	3.2%	72.7%	Korea, Republic of	57	3.0%	74.7%
Turkey	38	2.6%	71.3%	Saudi Arabia	44	2.6%	75.3%	Saudi Arabia	49	2.6%	77.3%
Saudi Arabia	36	2.4%	73.7%	Turkey	41	2.4%	77.7%	Turkey	34	1.8%	79.1%
Taiwan, Province of China	34	2.3%	76.0%	Bangladesh	32	1.9%	79.6%	Taiwan, Province of China	31	1.6%	80.8%
Bangladesh	29	1.9%	78.0%	Taiwan, Province of China	30	1.8%	81.3%	Bangladesh	30	1.6%	82.4%
Sri Lanka	27	1.8%	79.8%	Sri Lanka	25	1.5%	82.8%	Sri Lanka	20	1.1%	83.4%
Nepal	19	1.3%	81.0%	Nepal	19	1.1%	83.9%	Germany	18	1.0%	84.4%
Japan	16	1.1%	82.1%	Other (79)	274	16.1%	100.0%	Other (81)	296	15.6%	100.0%
Canada	15	1.0%	83.1%								
Other (68)	251	16.9%	100.0%								
Total	1,488			Total	1,703			Total	1,893		

By Country of Origin (Continued)

Fall 2016				Fall 2017				Fall 2018			
Country	count	% of intl.	cum. %	Country	count	% of intl.	cum. %	Country	count	% of intl.	cum. %
China	996	48.4%	48.4%	China	955	47.9%	47.9%	China	942	49.3%	49.3%
India	506	24.6%	73.0%	India	466	23.4%	71.3%	India	420	22.0%	71.2%
Iran (Islamic Republic Of)	57	2.8%	75.8%	Korea, Republic of	61	3.1%	74.4%	Iran (Islamic Republic Of)	54	2.8%	74.1%
Korea, Republic of	57	2.8%	78.6%	Iran (Islamic Republic Of)	55	2.8%	77.1%	Korea, Republic of	53	2.8%	76.8%
Saudi Arabia	46	2.2%	80.8%	Bangladesh	36	1.8%	78.9%	Bangladesh	40	2.1%	78.9%
Taiwan, Province of China	36	1.8%	82.5%	Saudi Arabia	36	1.8%	80.7%	Saudi Arabia	30	1.6%	80.5%
Bangladesh	32	1.6%	84.1%	Taiwan, Province of China	30	1.5%	82.2%	Taiwan, Province of China	27	1.4%	81.9%
Sri Lanka	21	1.0%	85.1%	Turkey	26	1.3%	83.5%	Sri Lanka	26	1.4%	83.3%
Other (79)	306	14.9%	100.0%	Sri Lanka	25	1.3%	84.8%	Turkey	23	1.2%	84.5%
				Nepal	21	1.1%	85.9%	Nepal	20	1.0%	85.5%
				Other (75)	282	14.1%	100.0%	Other (73)	277	14.5%	100.0%
Total	2,057			Total	1,993			Total	1,912		

By Country of Origin (Continued)

Fall 2019				Fall 2020				Fall 2021			
Country	count	% of intl.	cum. %	Country	count	% of intl.	cum. %	Country	count	% of intl.	cum. %
China	1,021	51.2%	51.2%	China	770	47.0%	47.0%	China	603	36.8%	36.8%
India	409	20.5%	71.7%	India	309	18.8%	65.8%	India	412	25.1%	61.9%
Korea, Republic of	62	3.1%	74.8%	Korea, Republic of	57	3.5%	69.3%	Korea, Republic of	53	3.2%	65.2%
Iran (Islamic Republic Of)	47	2.4%	77.1%	Bangladesh	45	2.7%	72.0%	Bangladesh	52	3.2%	68.3%
Bangladesh	42	2.1%	79.2%	Iran (Islamic Republic Of)	42	2.6%	74.6%	Iran (Islamic Republic Of)	50	3.1%	71.4%
Taiwan, Province of China	30	1.5%	80.8%	Taiwan, Province of China	26	1.6%	76.2%	Canada	26	1.6%	73.0%
Saudi Arabia	29	1.5%	82.2%	Saudi Arabia	24	1.5%	77.6%	Nigeria	25	1.5%	74.5%
Sri Lanka	23	1.2%	83.4%	Nepal	22	1.3%	79.0%	Nepal	25	1.5%	76.0%
Nepal	22	1.1%	84.5%	Canada	22	1.3%	80.3%	Turkey	24	1.5%	77.5%
Turkey	19	1.0%	85.4%	Sri Lanka	22	1.3%	81.6%	Sri Lanka	23	1.4%	78.9%
Other (74)	291	14.6%	100.0%	Turkey	21	1.3%	82.9%	Pakistan	21	1.3%	80.2%
				Japan	18	1.1%	84.0%	Brazil	19	1.2%	81.3%
				Pakistan	17	1.0%	85.1%	Saudi Arabia	19	1.2%	82.5%
				Other (74)	245	14.9%	100.0%	Ghana	16	1.0%	83.5%
								Japan	16	1.0%	84.4%
								Other (74)	255	15.6%	100.0%
Total	1,995			Total	1,640			Total	1,639		

CAHNR													
10th Day Enrollment Census, by Race/Ethnicity													
		Fall 2010	Fall 2011	Fall 2012	Fall 2013	Fall 2014	Fall 2015	Fall 2016	Fall 2017	Fall 2018	Fall 2019	Fall 2020	Fall 2021
Graduate Certificate	Black	0	0	0	0	0	2	2	1	1	3	2	1
	Hawaiian/Pacific Islander	0	0	0	0	0	0	0	0	1	1	1	0
	Latino	0	0	1	1	1	1	1	0	0	0	2	4
	Native American	0	0	0	0	0	1	1	0	0	0	0	1
	Multiracial URM	0	0	0	0	0	0	0	0	0	0	1	3
	Subtotal URM	0	0	1	1	1	4	4	1	2	4	6	9
	Multiracial Non-URM	0	0	0	0	0	0	0	1	1	0	0	0
	Asian American	0	0	0	0	2	1	0	0	1	1	2	4
	White	1	3	0	0	6	15	24	28	25	27	28	39
	Unknown	2	1	1	0	1	0	0	3	3	1	0	1
	International	2	2	1	0	0	0	1	0	1	1	0	2
	Subtotal Non-URM	5	6	2	0	9	16	25	32	31	30	30	46
	Total	5	6	3	1	10	20	29	33	33	34	36	55
Master's	Black	0	0	4	5	8	4	2	3	1	2	5	12
	Hawaiian/Pacific Islander	0	0	0	0	0	0	0	0	0	0	0	1
	Latino	2	3	3	3	3	4	5	4	5	9	17	23
	Native American	0	0	0	0	0	0	0	0	1	0	2	1
	Multiracial URM	0	0	1	2	0	0	1	0	0	2	1	2
	Subtotal URM	2	3	8	10	11	8	8	7	7	13	25	39
	Multiracial Non-URM	0	0	0	0	1	3	3	2	0	1	3	2
	Asian American	4	5	6	6	6	4	3	4	3	5	5	9
	White	65	63	52	51	79	69	65	70	70	92	123	147
	Unknown	4	4	5	4	6	6	3	3	4	7	4	2
	International	16	16	22	33	54	42	36	25	18	19	19	27
	Subtotal Non-URM	89	88	85	94	146	124	110	104	95	124	154	187
	Total	91	91	93	104	157	132	118	111	102	137	179	226

CAHNR (Continued)													
10th Day Enrollment Census, by Race/Ethnicity													
		Fall 2010	Fall 2011	Fall 2012	Fall 2013	Fall 2014	Fall 2015	Fall 2016	Fall 2017	Fall 2018	Fall 2019	Fall 2020	Fall 2021
Doctoral	Black	3	2	2	3	1	1	4	4	7	6	7	5
	Hawaiian/Pacific Islander	0	0	1	1	1	0	0	0	0	0	0	0
	Latino	3	4	4	3	6	5	6	9	6	4	7	9
	Native American	1	1	0	0	0	0	0	0	0	0	0	0
	Multiracial URM	0	0	1	1	2	2	2	0	0	0	1	1
	Subtotal URM	7	7	8	8	10	8	12	13	13	10	15	15
	Multiracial Non-URM	0	0	0	0	2	2	7	7	10	5	5	2
	Asian American	5	6	6	6	9	12	9	7	5	7	9	16
	White	33	32	30	25	110	115	115	117	126	131	124	119
	Unknown	1	3	3	3	11	11	10	12	13	9	2	2
	International	55	56	64	59	63	61	60	61	59	67	63	72
	Subtotal Non-URM	94	97	103	93	195	201	201	204	213	219	203	211
	Total	101	104	111	101	205	209	213	217	226	229	218	226

Business													
10th Day Enrollment Census, by Race/Ethnicity													
		Fall 2010	Fall 2011	Fall 2012	Fall 2013	Fall 2014	Fall 2015	Fall 2016	Fall 2017	Fall 2018	Fall 2019	Fall 2020	Fall 2021
Graduate Certificate	Black	0	0	0	0	2	3	9	1	0	9	15	15
	Hawaiian/Pacific Islander	0	0	0	0	0	0	0	0	0	0	0	0
	Latino	0	0	0	0	0	2	2	2	0	1	13	15
	Native American	0	0	0	0	0	1	0	0	0	0	0	0
	Multiracial URM	0	0	0	0	0	0	2	1	0	2	2	3
	Subtotal URM	0	0	0	0	2	6	13	4	0	12	30	33
	Multiracial Non-URM	0	0	0	0	1	1	0	0	0	2	1	1
	Asian American	0	0	0	0	1	3	3	1	0	11	4	10
	White	0	0	0	0	22	32	44	22	11	43	69	82
	Unknown	0	0	0	0	2	2	16	62	75	30	9	7
	International	0	0	0	0	0	1	5	7	1	5	7	5
	Subtotal Non-URM	0	0	0	0	26	39	68	92	87	91	90	105
	Total	0	0	0	0	28	45	81	96	87	103	120	138
Master's	Black	57	49	42	43	50	68	85	94	99	104	103	94
	Hawaiian/Pacific Islander	0	1	1	1	1	0	0	1	2	1	0	0
	Latino	57	56	48	55	56	85	96	110	117	130	144	158
	Native American	3	2	1	2	2	1	1	1	3	1	1	1
	Multiracial URM	0	3	4	7	8	10	16	16	20	18	21	27
	Subtotal URM	117	111	96	108	117	164	198	222	241	254	269	280
	Multiracial Non-URM	0	2	5	4	6	9	14	12	16	14	13	11
	Asian American	100	108	94	81	104	106	131	130	135	177	148	127
	White	946	810	765	696	676	733	757	784	820	839	818	721
	Unknown	60	70	60	49	35	47	60	75	76	45	34	23
	International	95	124	171	247	419	616	822	783	694	751	513	440
	Subtotal Non-URM	1,201	1,114	1,095	1,077	1,240	1,511	1,784	1,784	1,741	1,826	1,526	1,322
	Total	1,318	1,225	1,191	1,185	1,357	1,675	1,982	2,006	1,982	2,080	1,795	1,602

Business (Continued)													
10th Day Enrollment Census, by Race/Ethnicity													
		Fall 2010	Fall 2011	Fall 2012	Fall 2013	Fall 2014	Fall 2015	Fall 2016	Fall 2017	Fall 2018	Fall 2019	Fall 2020	Fall 2021
Doctoral	Black	0	1	1	1	1	2	1	0	0	0	0	0
	Hawaiian/Pacific Islander	0	0	0	0	0	0	0	0	0	0	1	1
	Latino	0	0	0	0	1	1	2	3	3	4	4	4
	Native American	0	0	0	0	0	0	0	0	0	0	0	0
	Multiracial URM	0	0	0	0	0	0	0	0	0	0	0	0
	Subtotal URM	0	1	1	1	2	3	3	3	3	4	5	5
	Multiracial Non-URM	0	0	0	0	0	1	1	0	0	0	0	0
	Asian American	2	2	3	4	3	3	1	3	2	2	2	3
	White	17	17	17	15	12	7	6	8	9	12	14	14
	Unknown	2	2	2	2	4	4	3	2	0	0	0	0
	International	39	33	30	30	27	28	33	33	33	36	31	34
	Subtotal Non-URM	60	54	52	51	46	43	44	46	44	50	47	51
	Total	60	55	53	52	48	46	47	49	47	54	52	56

Education													
10th Day Enrollment Census, by Race/Ethnicity													
		Fall 2010	Fall 2011	Fall 2012	Fall 2013	Fall 2014	Fall 2015	Fall 2016	Fall 2017	Fall 2018	Fall 2019	Fall 2020	Fall 2021
Graduate Certificate / Sixth-Year Diploma	Black	4	6	9	3	4	11	11	6	10	19	24	19
	Hawaiian/Pacific Islander	0	0	0	0	0	0	0	0	0	0	0	0
	Latino	10	4	10	7	6	3	5	8	9	15	11	16
	Native American	0	1	1	0	0	0	0	0	0	1	0	0
	Multiracial URM	0	1	1	1	1	1	2	1	1	2	3	3
	Subtotal URM	14	12	21	11	11	15	18	15	20	37	38	38
	Multiracial Non-URM	0	1	5	3	1	0	0	3	3	1	1	0
	Asian American	4	2	1	2	5	4	2	1	1	2	6	5
	White	116	99	92	102	116	119	136	122	109	139	169	156
	Unknown	5	7	7	5	12	14	17	19	17	23	7	4
	International	3	2	3	3	1	2	1	8	3	9	15	13
	Subtotal Non-URM	128	111	108	115	135	139	156	153	133	174	198	178
	Total	142	123	129	126	146	154	174	168	153	211	236	216
Master's	Black	27	22	15	18	16	18	28	28	18	27	24	18
	Hawaiian/Pacific Islander	0	0	0	0	0	1	1	1	0	1	0	0
	Latino	24	22	25	25	27	31	26	26	32	41	37	47
	Native American	1	0	1	1	1	0	1	2	3	1	0	0
	Multiracial URM	0	3	2	0	2	1	2	7	4	5	10	10
	Subtotal URM	52	47	43	44	46	51	58	64	57	75	71	75
	Multiracial Non-URM	0	1	5	6	3	3	4	4	8	6	5	5
	Asian American	13	5	10	11	15	18	13	16	12	12	11	14
	White	333	297	320	303	270	263	274	262	234	228	228	239
	Unknown	25	83	42	29	33	39	29	48	39	5	4	5
	International	10	10	14	15	18	10	7	14	16	13	10	11
	Subtotal Non-URM	381	396	391	364	339	333	327	344	309	264	258	274
	Total	433	443	434	408	385	384	385	408	366	339	329	349

Education (Continued)													
10th Day Enrollment Census, by Race/Ethnicity													
		Fall 2010	Fall 2011	Fall 2012	Fall 2013	Fall 2014	Fall 2015	Fall 2016	Fall 2017	Fall 2018	Fall 2019	Fall 2020	Fall 2021
Doctoral	Black	4	3	4	13	15	22	26	26	24	25	24	27
	Hawaiian/Pacific Islander	0	0	0	0	0	0	0	0	0	0	0	0
	Latino	12	12	10	10	7	12	14	19	16	24	23	24
	Native American	1	2	1	1	1	1	1	0	0	0	0	0
	Multiracial URM	0	1	2	3	2	3	4	4	3	3	2	4
	Subtotal URM	17	18	17	27	25	38	45	49	43	52	49	55
	Multiracial Non-URM	0	0	1	2	1	1	2	1	1	1	1	2
	Asian American	11	11	12	11	7	7	6	5	6	3	4	2
	White	182	181	185	187	112	105	99	105	98	109	106	130
	Unknown	19	19	20	23	10	11	17	20	23	16	14	10
	International	20	21	20	22	14	12	16	16	16	15	11	11
	Subtotal Non-URM	232	232	238	245	144	136	140	147	144	144	136	155
	Total	249	250	255	272	169	174	185	196	187	196	185	210

Engineering													
10th Day Enrollment Census, by Race/Ethnicity													
		Fall 2010	Fall 2011	Fall 2012	Fall 2013	Fall 2014	Fall 2015	Fall 2016	Fall 2017	Fall 2018	Fall 2019	Fall 2020	Fall 2021
Graduate Certificate	Black	0	0	0	0	0	0	0	2	2	3	4	1
	Hawaiian/Pacific Islander	0	0	0	0	0	0	0	0	0	0	0	0
	Latino	0	0	0	0	1	0	0	0	3	2	5	5
	Native American	0	0	0	0	0	0	0	0	0	0	1	0
	Multiracial URM	0	0	0	0	0	0	0	0	0	0	1	1
	Subtotal URM	0	0	0	0	1	0	0	2	5	5	11	7
	Multiracial Non-URM	0	0	0	0	0	0	0	0	0	1	2	2
	Asian American	0	0	0	0	2	5	1	1	0	6	10	9
	White	0	0	0	0	9	9	8	4	10	28	32	19
	Unknown	0	0	0	0	2	1	4	0	4	3	1	1
	International	0	0	0	0	0	23	2	3	4	0	3	1
	Subtotal Non-URM	0	0	0	0	13	38	15	8	18	38	48	32
	Total	0	0	0	0	14	38	15	10	23	43	59	39
Master's	Black	9	6	7	11	11	15	13	7	11	12	11	18
	Hawaiian/Pacific Islander	0	0	0	0	0	1	1	1	1	1	1	1
	Latino	10	11	13	18	15	12	16	23	25	21	29	35
	Native American	0	0	0	0	0	0	0	0	0	0	0	0
	Multiracial URM	0	0	0	0	2	2	3	4	4	4	5	6
	Subtotal URM	19	17	20	29	28	30	33	35	41	38	46	60
	Multiracial Non-URM	0	0	0	3	6	7	2	0	1	3	5	8
	Asian American	27	30	25	27	29	28	16	18	23	24	38	32
	White	154	139	141	184	192	180	169	173	190	199	234	227
	Unknown	12	22	21	19	27	26	22	22	23	19	10	6
	International	69	67	88	102	93	84	78	67	44	28	27	32
	Subtotal Non-URM	262	258	275	335	347	325	287	280	281	273	314	305
	Total	281	275	295	364	375	355	320	315	322	311	360	365

Engineering (Continued)													
10th Day Enrollment Census, by Race/Ethnicity													
		Fall 2010	Fall 2011	Fall 2012	Fall 2013	Fall 2014	Fall 2015	Fall 2016	Fall 2017	Fall 2018	Fall 2019	Fall 2020	Fall 2021
Doctoral	Black	7	6	5	7	12	12	10	12	16	17	14	16
	Hawaiian/Pacific Islander	0	0	0	0	1	1	1	1	1	1	1	0
	Latino	9	9	10	13	9	9	8	7	7	10	13	15
	Native American	0	0	0	0	0	0	0	0	0	0	0	0
	Multiracial URM	0	0	1	1	1	1	0	0	1	1	1	1
	Subtotal URM	16	15	16	21	23	23	19	20	25	29	29	32
	Multiracial Non-URM	0	0	0	1	2	1	3	3	3	5	5	6
	Asian American	16	14	16	13	20	20	21	22	26	23	23	25
	White	101	115	113	114	113	110	108	111	106	121	131	125
	Unknown	11	16	19	20	13	15	16	13	15	11	10	11
	International	258	265	277	313	331	341	328	319	324	339	326	352
	Subtotal Non-URM	386	410	425	461	479	487	476	468	474	499	495	519
	Total	402	425	441	482	502	510	495	488	499	528	524	551

Fine Arts													
10th Day Enrollment Census, by Race/Ethnicity													
		Fall 2010	Fall 2011	Fall 2012	Fall 2013	Fall 2014	Fall 2015	Fall 2016	Fall 2017	Fall 2018	Fall 2019	Fall 2020	Fall 2021
Graduate Certificate	Black	0	1	1	0	0	0	1	0	1	1	2	2
	Hawaiian/Pacific Islander	0	0	0	0	0	0	0	0	0	0	0	0
	Latino	1	0	0	0	0	2	4	2	2	0	3	3
	Native American	0	0	0	0	0	0	0	0	0	0	0	0
	Multiracial URM	0	0	0	0	0	0	1	0	1	0	0	1
	Subtotal URM	1	1	1	0	0	2	6	2	4	1	5	6
	Multiracial Non-URM	0	0	0	0	1	1	1	0	0	0	1	1
	Asian American	0	0	0	0	0	0	0	0	0	1	0	0
	White	1	8	2	3	4	11	26	32	22	22	24	19
	Unknown	0	0	0	0	0	1	2	3	4	1	1	0
	International	3	2	2	1	1	2	1	2		2	2	2
	Subtotal Non-URM	4	10	4	4	6	15	30	37	26	26	28	22
	Total	5	11	5	4	6	17	36	39	30	27	33	28
Master's	Black	3	4	3	5	5	4	4	5	5	6	6	4
	Hawaiian/Pacific Islander	0	0	0	0	0	0	0	0	0	0	0	0
	Latino	4	3	1	3	5	5	3	1	2	7	9	7
	Native American	0	0	0	0	0	0	0	0	0	0	0	0
	Multiracial URM	0	0	0	1	3	4	2	1	1	1	0	0
	Subtotal URM	7	7	4	9	13	13	9	7	8	14	15	11
	Multiracial Non-URM	0	0	0	0	1	3	3	2	1	1	0	0
	Asian American	1	0	1	2	2	2	1	1	3	3	2	2
	White	66	65	64	57	51	50	50	48	49	49	52	49
	Unknown	3	5	5	1	1	3	8	8	9	5	3	0
	International	3	7	9	10	12	7	8	11	12	13	14	19
	Subtotal Non-URM	73	77	79	70	67	65	70	70	74	71	71	70
	Total	80	84	83	79	80	78	79	77	82	85	86	81

Fine Arts (Continued)													
10th Day Enrollment Census, by Race/Ethnicity													
		Fall 2010	Fall 2011	Fall 2012	Fall 2013	Fall 2014	Fall 2015	Fall 2016	Fall 2017	Fall 2018	Fall 2019	Fall 2020	Fall 2021
Doctoral	Black	0	0	0	0	1	1	2	2	3	2	2	2
	Hawaiian/Pacific Islander	0	0	0	0	0	0	0	0	0	0	0	0
	Latino	1	1	1	1	1	0	0	0	0	0	1	2
	Native American	1	0	0	0	1	1	0	0	0	0	0	0
	Multiracial URM	0	1	1	1	1	1	1	1	2	2	2	2
	Subtotal URM	2	2	2	2	4	3	3	3	5	4	5	6
	Multiracial Non-URM	0	0	0	0	0	0	0	0	0	0	0	0
	Asian American	1	1	2	2	4	4	3	1	2	2	3	1
	White	27	25	22	20	16	12	13	10	10	10	13	13
	Unknown	3	4	4	4	3	1	2	1	3	2	1	1
	International	7	8	4	3	1	2	1		1	1	3	4
	Subtotal Non-URM	38	38	32	29	24	19	19	12	16	15	20	19
	Total	40	40	34	31	28	22	22	15	21	19	25	25

CLAS													
10th Day Enrollment Census, by Race/Ethnicity													
		Fall 2010	Fall 2011	Fall 2012	Fall 2013	Fall 2014	Fall 2015	Fall 2016	Fall 2017	Fall 2018	Fall 2019	Fall 2020	Fall 2021
Graduate Certificate	Black	3	8	7	2	2	3	4	5	5	10	7	16
	Hawaiian/Pacific Islander	0	0	0	0	0	0	0	0	0	0	0	0
	Latino	1	0	2	2	2	3	2	3	3	7	10	9
	Native American	0	0	0	1	0	0	0	0	1	0	0	0
	Multiracial URM	0	0	2	3	1	1	1	2	3	3	1	2
	Subtotal URM	4	8	11	8	5	7	7	10	12	20	18	27
	Multiracial Non-URM	0	0	0	0	0	0	1	1	1	0	1	1
	Asian American	3	3	6	4	7	4	5	8	3	3	5	8
	White	55	53	50	39	48	54	53	44	46	75	83	98
	Unknown	4	6	4	6	14	15	20	14	17	13	8	7
	International	7	11	7	8	7	10	7	12	11	9	20	24
	Subtotal Non-URM	69	73	67	57	76	83	86	79	78	100	117	138
	Total	73	81	78	65	81	90	93	89	90	120	135	165
Master's	Black	16	17	13	13	17	16	14	14	18	26	33	32
	Hawaiian/Pacific Islander	0	0	0	1	1	1	1	1	0	0	0	0
	Latino	30	17	19	18	16	19	30	26	24	38	56	69
	Native American	2	6	5	2	1	0	0	0	1	0	0	0
	Multiracial URM	0	4	3	4	6	6	6	9	7	4	4	5
	Subtotal URM	48	44	40	38	41	42	51	50	50	68	93	106
	Multiracial Non-URM	0	1	2	1	3	3	2	0	1	7	5	5
	Asian American	27	30	31	26	16	19	21	23	24	26	32	32
	White	306	290	276	290	264	247	245	236	225	231	249	273
	Unknown	23	43	45	35	32	32	27	27	21	12	6	4
	International	130	138	151	154	152	169	168	152	166	168	113	79
	Subtotal Non-URM	486	502	505	506	467	470	463	438	437	444	405	393
	Total	534	546	545	544	508	512	514	488	487	512	498	499

CLAS (Continued)													
10th Day Enrollment Census, by Race/Ethnicity													
		Fall 2010	Fall 2011	Fall 2012	Fall 2013	Fall 2014	Fall 2015	Fall 2016	Fall 2017	Fall 2018	Fall 2019	Fall 2020	Fall 2021
Doctoral	Black	34	35	32	24	27	28	33	31	32	24	28	27
	Hawaiian/Pacific Islander	0	1	0	0	0	0	1	1	1	1	0	0
	Latino	42	39	41	38	38	35	32	41	45	59	64	73
	Native American	4	3	3	3	3	2	2	1	1	1	0	0
	Multiracial URM	0	0	1	5	9	9	14	15	18	19	14	8
	Subtotal URM	80	78	77	70	77	74	82	89	97	104	106	108
	Multiracial Non-URM	0	1	1	1	4	5	8	10	8	11	11	12
	Asian American	43	40	44	51	49	47	42	35	30	26	32	43
	White	656	615	612	640	643	627	602	613	585	558	566	552
	Unknown	90	114	122	119	116	97	95	83	81	58	38	28
	International	382	398	413	403	426	414	422	436	451	450	425	461
	Subtotal Non-URM	1,171	1,168	1,192	1,214	1,238	1,190	1,169	1,177	1,155	1,103	1,072	1,096
	Total	1,251	1,246	1,269	1,284	1,315	1,264	1,251	1,266	1,252	1,207	1,178	1,204

Nursing													
10th Day Enrollment Census, by Race/Ethnicity													
		Fall 2010	Fall 2011	Fall 2012	Fall 2013	Fall 2014	Fall 2015	Fall 2016	Fall 2017	Fall 2018	Fall 2019	Fall 2020	Fall 2021
Graduate Certificate / Post-Master's Certificate	Black	0	0	0	0	0	0	2	1	2	2	5	7
	Hawaiian/Pacific Islander	0	0	0	0	0	0	0	0	0	0	0	0
	Latino	0	0	0	0	0	0	1	3	0	4	3	5
	Native American	0	0	0	0	0	0	0	0	0	0	1	0
	Multiracial URM	0	0	0	0	0	0	1	0	0	0	0	0
	Subtotal URM	0	0	0	0	0	0	4	4	2	6	9	12
	Multiracial Non-URM	0	0	0	0	0	0	0	0	0	0	0	2
	Asian American	0	0	0	0	0	1	4	4	2	2	2	3
	White	4	3	3	2	3	9	10	18	17	12	26	34
	Unknown	0	0	0	0	0	2	2	4	1	0	0	1
	International	0	0	0	0	0	1	2	2	4	7	2	3
	Subtotal Non-URM	4	3	3	2	3	13	18	28	24	21	30	43
	Total	4	3	3	2	3	13	22	32	26	27	39	55
Master's	Black	6	6	6	8	10	8	10	12	12	10	11	11
	Hawaiian/Pacific Islander	0	0	0	0	0	0	0	0	0	0	0	0
	Latino	8	5	1	3	3	5	4	3	6	6	7	13
	Native American	0	0	0	0	0	0	0	0	0	0	0	0
	Multiracial URM	0	0	0	0	1	1	0	0	1	1	2	1
	Subtotal URM	14	11	7	11	14	14	14	15	19	17	20	25
	Multiracial Non-URM	0	0	0	0	0	0	1	1	1	0	1	2
	Asian American	11	10	6	6	6	8	8	7	6	7	9	8
	White	100	82	76	79	90	77	91	79	90	104	102	112
	Unknown	2	3	9	11	13	7	5	5	6	4	1	2
	International	1	0	0	1	2	1	0	0	1	2	5	2
	Subtotal Non-URM	114	95	91	97	111	93	105	92	104	117	118	126
	Total	128	106	98	108	125	107	119	107	123	134	138	151

Nursing (Continued)													
10th Day Enrollment Census, by Race/Ethnicity													
		Fall 2010	Fall 2011	Fall 2012	Fall 2013	Fall 2014	Fall 2015	Fall 2016	Fall 2017	Fall 2018	Fall 2019	Fall 2020	Fall 2021
Doctoral	Black	4	2	4	8	6	7	11	11	9	10	9	9
	Hawaiian/Pacific Islander	0	0	0	0	0	0	0	0	0	0	0	0
	Latino	2	2	0	2	2	4	4	4	5	5	10	10
	Native American	0	0	0	0	0	0	0	0	0	0	0	0
	Multiracial URM	0	0	0	0	0	0	1	1	1	1	1	2
	Subtotal URM	6	4	4	10	8	11	16	16	15	16	20	21
	Multiracial Non- URM	0	0	0	0	0	0	0	0	0	1	1	1
	Asian American	0	0	0	0	2	2	2	3	5	6	5	7
	White	44	45	49	61	61	55	57	67	73	72	73	79
	Unknown	4	5	4	5	5	8	8	8	6	3	5	4
	International	1	1	1	1	2	2	3	5	6	10	9	7
	Subtotal Non- URM	49	51	54	67	70	67	70	83	90	92	93	98
	Total	55	55	58	77	78	78	86	99	105	108	113	119

Pharmacy													
10th Day Enrollment Census, by Race/Ethnicity													
		Fall 2010	Fall 2011	Fall 2012	Fall 2013	Fall 2014	Fall 2015	Fall 2016	Fall 2017	Fall 2018	Fall 2019	Fall 2020	Fall 2021
Master's	Black												
	Hawaiian/Pacific Islander												
	Latino							1					
	Native American												
	Multiracial URM												
	Subtotal URM	0	0	0	0	0	0	1	0	0	0	0	0
	Multiracial Non-URM												
	Asian American												
	White		1	1			1	1					
	Unknown									1	1		
	International				1	1	1	1	1				
	Subtotal Non-URM	0	1	1	1	1	2	2	1	1	1	0	0
	Total	0	1	1	1	1	2	3	1	1	1	0	0
Doctoral	Black	1	1	3	2	2	1	1	1	1	1	0	0
	Hawaiian/Pacific Islander	0	0	0	0	0	0	0	0	0	0	0	0
	Latino	1	1	0	1	2	2	1	1	1	1	1	1
	Native American	0	0	0	0	0	0	0	0	0	0	0	0
	Multiracial URM	0	0	0	0	0	0	0	0	0	0	0	0
	Subtotal URM	2	2	3	3	4	3	2	2	2	2	1	1
	Multiracial Non-URM	0	0	0	0	0	0	0	0	0	0	0	1
	Asian American	4	4	2	4	3	3	3	2	3	2	2	2
	White	14	12	12	16	12	13	14	10	6	6	7	8
	Unknown	1	5	5	5	4	4	4	2	2	1	2	1
	International	25	29	29	28	29	26	26	26	23	27	27	28
	Subtotal Non-URM	44	50	48	53	48	46	47	40	34	36	38	40
	Total	46	52	51	56	52	49	49	42	36	38	39	41

Social Work													
10th Day Enrollment Census, by Race/Ethnicity													
		Fall 2010	Fall 2011	Fall 2012	Fall 2013	Fall 2014	Fall 2015	Fall 2016	Fall 2017	Fall 2018	Fall 2019	Fall 2020	Fall 2021
Master's	Black	94	104	102	81	68	56	55	53	53	43	53	52
	Hawaiian/Pacific Islander	0	0	0	1	1	1	0	1	1	0	0	0
	Latino	35	43	46	45	44	45	47	42	42	38	47	59
	Native American	1	3	1	2	3	1	0	0	2	2	0	0
	Multiracial URM	0	8	11	9	11	12	7	5	10	15	8	8
	Subtotal URM	130	158	160	138	127	115	109	101	108	98	108	119
	Multiracial Non-URM	0	2	7	6	2	1	3	2	4	3	7	4
	Asian American	6	7	7	7	6	5	6	5	6	8	9	11
	White	231	246	260	289	241	194	190	197	194	186	228	231
	Unknown	10	5	5	14	14	17	14	12	10	4	4	3
	International	3	2	1	2	0	1	4	4	1	2	2	1
	Subtotal Non-URM	250	262	280	318	263	218	217	220	215	203	250	250
	Total	380	420	440	456	390	333	326	321	323	301	358	369
Doctoral	Black	4	4	3	3	2	2	2	2	4	4	3	3
	Hawaiian/Pacific Islander	0	0	0	0	0	0	0	0	0	0	0	0
	Latino	3	3	3	4	3	1	0	1	1	0	0	0
	Native American	0	0	0	0	0	0	0	0	0	0	0	0
	Multiracial URM	0	0	0	0	0	0	0	0	0	0	0	1
	Subtotal URM	7	7	6	7	5	3	2	3	5	4	3	4
	Multiracial Non-URM	0	0	0	0	1	1	1	1	1	1	1	0
	Asian American	0	1	1	1	2	2	1	1	1	1	0	1
	White	15	14	14	18	17	18	15	15	13	15	16	17
	Unknown	0	0	0	0	0	0	1	1	1	1	0	0
	International	3	2	2	1	1	1	0	0	0	0	0	0
	Subtotal Non-URM	18	17	17	20	21	22	18	18	16	18	17	18
	Total	25	24	23	27	26	25	20	21	21	22	20	22

<div> <div>UHC</div> <div>10th Day Enrollment Census, by Race/Ethnicity</div> </div>													
		Fall 2010	Fall 2011	Fall 2012	Fall 2013	Fall 2014	Fall 2015	Fall 2016	Fall 2017	Fall 2018	Fall 2019	Fall 2020	Fall 2021
Graduate Certificate	Black	5	1	1	1	9	9	6	8	6	3	5	8
	Hawaiian/Pacific Islander	0	0	0	0	0	0	0	0	0	0	0	0
	Latino	0	0	0	0	1	2	2	2	3	6	4	1
	Native American	0	0	0	0	0	0	0	0	0	0	1	0
	Multiracial URM	0	0	0	0	3	1	0	1	2	3	3	1
	Subtotal URM	5	1	1	1	13	12	8	11	11	12	13	10
	Multiracial Non-URM	0	0	0	0	0	0	1	0	0	0	2	0
	Asian American	0	0	0	0	0	4	2	2	4	4	4	3
	White	0	0	0	0	9	18	23	26	30	26	26	30
	Unknown	0	0	0	0	2	3	3	2	2	1	0	0
	International	2	2	2	1	1	1	1	0	0	1	2	3
	Subtotal Non-URM	2	2	2	1	12	26	30	30	36	32	34	36
	Total	7	3	3	2	25	38	38	41	47	44	47	46
Master's	Black	10	9	7	9	15	16	15	13	15	20	19	15
	Hawaiian/Pacific Islander	0	0	0	0	0	1	0	0	0	0	0	0
	Latino	9	6	7	9	6	5	4	11	8	11	14	16
	Native American	0	0	0	0	0	0	0	0	0	0	0	0
	Multiracial URM	0	0	0	0	0	3	2	0	0	0	1	2
	Subtotal URM	19	15	14	18	21	25	21	24	23	31	34	33
	Multiracial Non-URM	0	1	1	1	1	1	3	3	2	1	1	4
	Asian American	14	13	16	16	18	17	18	21	23	22	18	28
	White	88	86	85	75	88	78	73	70	76	68	65	66
	Unknown	13	14	12	14	16	13	12	9	8	5	3	2
	International	25	29	24	19	26	26	21	19	18	17	15	17
	Subtotal Non-URM	140	143	138	125	149	135	127	122	127	113	102	117
	Total	159	158	152	143	170	160	148	146	150	144	136	150

UCHC (Continued)													
10th Day Enrollment Census, by Race/Ethnicity													
		Fall 2010	Fall 2011	Fall 2012	Fall 2013	Fall 2014	Fall 2015	Fall 2016	Fall 2017	Fall 2018	Fall 2019	Fall 2020	Fall 2021
Doctoral	Black	10	8	6	5	3	1	2	4	2	2	2	3
	Hawaiian/Pacific Islander	0	0	0	1	0	0	0	0	0	0	0	0
	Latino	3	4	3	3	3	2	2	2	3	5	6	9
	Native American	1	1	0	0	0	0	0	0	0	0	0	0
	Multiracial URM	0	1	1	1	1	1	0	0	0	1	2	2
	Subtotal URM	14	14	10	10	7	4	4	6	5	8	10	14
	Multiracial Non-URM	0	0	0	0	0	0	0	0	0	0	2	2
	Asian American	11	11	7	7	11	18	18	15	18	21	19	20
	White	66	61	71	75	81	82	86	87	90	86	97	95
	Unknown	12	11	7	8	5	2	2	5	5	5	5	4
	International	61	64	68	66	59	45	41	29	30	34	34	41
	Subtotal Non-URM	150	147	153	156	156	147	147	136	143	146	157	162
	Total	164	161	163	166	163	151	151	142	148	154	167	176

Degrees

Degree data reflect degree and certificate conferred in August, December, and May. For example, 20-21 corresponds to degrees conferred in August 2020, December 2020, and May 2021.

Degrees Conferred, by Degree Level													
	09-10	10-11	11-12	12-13	13-14	14-15	15-16	16-17	17-18	18-19	19-20	20-21	Total
Post-Bachelor's Certificate	61	65	93	83	109	127	189	217	271	319	283	393	2,210
Sixth-Year Diploma/Post-Master's Certificate	69	69	79	56	45	69	66	62	51	54	53	65	738
Master's	1,438	1,475	1,573	1,527	1,636	1,713	1,750	1,904	2,048	1,895	1,774	1,926	20,659
Doctoral	309	322	341	340	342	372	379	411	384	418	382	368	4,368
Total	1,877	1,931	2,086	2,006	2,132	2,281	2,384	2,594	2,754	2,686	2,492	2,752	27,975

Degrees Conferred, by School/College													
	09-10	10-11	11-12	12-13	13-14	14-15	15-16	16-17	17-18	18-19	19-20	20-21	Total
CAHNR	64	70	61	58	56	102	103	133	142	126	131	141	1,187
Business	406	479	441	440	482	560	641	811	959	850	852	985	7,906
CETL	23	33	33	27	57	20	23	3	0	0	0	0	219
Education	416	371	455	427	401	422	438	451	428	444	392	440	5,085
Engineering	125	161	178	185	217	218	260	234	236	243	160	242	2,459
Fine Arts	26	35	46	27	37	49	43	52	58	51	44	58	526
CLAS	510	475	553	531	551	562	577	577	604	592	592	559	6,683
Nursing	40	58	55	31	42	64	56	66	74	107	79	97	769
Pharmacy	11	11	6	8	6	12	9	9	13	11	10	6	112
Social Work	184	159	181	200	211	201	139	170	149	169	154	146	2,063
UCHC	72	79	77	72	72	71	95	88	91	93	78	78	966
Total	1,877	1,931	2,086	2,006	2,132	2,281	2,384	2,594	2,754	2,686	2,492	2,752	27,975

Degrees Conferred, by IPEDS Race & Ethnicity													
	09-10	10-11	11-12	12-13	13-14	14-15	15-16	16-17	17-18	18-19	19-20	20-21	Total
Latino	88	85	81	80	96	93	98	120	109	137	153	173	1,313
Native American	5	1	5	6	2	7	2	4	1	4	3	3	43
Black	107	103	104	115	97	107	95	100	129	123	123	169	1,372
Hawaiian/ Pacific Islander	0	0	0	2	0	1	1	2	2	2	4	2	16
Multi-racial	0	0	0	19	27	23	28	46	39	55	53	55	345
Asian	88	92	108	107	86	107	117	123	133	116	124	166	1,367
White	1,195	1,229	1,274	1,176	1,243	1,267	1,214	1,246	1,218	1,285	1,215	1,398	14,960
Unknown	102	110	165	127	167	172	176	176	229	222	137	81	1,864
International	292	311	349	374	414	504	653	777	894	742	680	705	6,695
Total	1,877	1,931	2,086	2,006	2,132	2,281	2,384	2,594	2,754	2,686	2,492	2,752	27,975

CAHNR													
Degrees Conferred, by Degree Level													
	09-10	10-11	11-12	12-13	13-14	14-15	15-16	16-17	17-18	18-19	19-20	20-21	Total
Post-Bachelor's Certificate	3	10	2	2	4	5	10	18	23	25	20	27	149
Sixth-Year Diploma/ Post-Master's Certificate	0	0	0	0	0	0	0	0	0	0	0	0	0
Master's	42	39	46	37	34	76	73	66	73	49	44	64	643
Doctoral	19	21	13	19	18	21	20	49	46	52	67	50	395
Total	64	70	61	58	56	102	103	133	142	126	131	141	1,187

Business													
Degrees Conferred, by Degree Level													
	09-10	10-11	11-12	12-13	13-14	14-15	15-16	16-17	17-18	18-19	19-20	20-21	Total
Post-Bachelor's Certificate	0	0	0	0	0	16	22	25	43	59	75	96	336
Sixth-Year Diploma/ Post-Master's Certificate	0	0	0	0	0	0	0	0	0	0	0	0	0
Master's	396	472	435	430	472	533	611	779	910	783	772	883	7,476
Doctoral	10	7	6	10	10	11	8	7	6	8	5	6	94
Total	406	479	441	440	482	560	641	811	959	850	852	985	7,906

Center for Excellence in Teaching & Learning													
Degrees Conferred, by Degree Level													
	09-10	10-11	11-12	12-13	13-14	14-15	15-16	16-17	17-18	18-19	19-20	20-21	Total
Post-Bachelor's Certificate	8	4	9	7	21	6	0	0	0	0	0	0	55
Sixth-Year Diploma/ Post-Master's Certificate	0	0	0	0	0	0	0	0	0	0	0	0	0
Master's	15	29	24	20	36	14	23	3	0	0	0	0	164
Doctoral	0	0	0	0	0	0	0	0	0	0	0	0	0
Total	23	33	33	27	57	20	23	3	0	0	0	0	219

Education													
Degrees Conferred, by Degree Level													
	09-10	10-11	11-12	12-13	13-14	14-15	15-16	16-17	17-18	18-19	19-20	20-21	Total
Post-Bachelor's Certificate	0	9	11	17	12	29	28	64	67	56	56	75	424
Sixth-Year Diploma/ Post-Master's Certificate	69	67	79	56	45	69	66	62	51	54	50	61	729
Master's	318	253	317	297	296	269	298	304	290	313	261	269	3,485
Doctoral	29	42	48	57	48	55	46	21	20	21	25	35	447
Total	416	371	455	427	401	422	438	451	428	444	392	440	5,085

Engineering													
Degrees Conferred, by Degree Level													
	09-10	10-11	11-12	12-13	13-14	14-15	15-16	16-17	17-18	18-19	19-20	20-21	Total
Post-Bachelor's Certificate	0	0	0	0	0	0	29	15	5	9	9	38	105
Sixth-Year Diploma/ Post-Master's Certificate	0	0	0	0	0	0	0	0	0	0	0	0	0
Master's	88	106	126	134	144	151	161	139	152	142	95	133	1,571
Doctoral	37	55	52	51	73	67	70	80	79	92	56	71	783
Total	125	161	178	185	217	218	260	234	236	243	160	242	2,459

Fine Arts													
Degrees Conferred, by Degree Level													
	09-10	10-11	11-12	12-13	13-14	14-15	15-16	16-17	17-18	18-19	19-20	20-21	Total
Post-Bachelor's Certificate	3	3	11	0	4	6	10	14	21	21	13	20	126
Sixth-Year Diploma/ Post-Master's Certificate	0	0	0	0	0	0	0	0	0	0	0	0	0
Master's	20	29	28	22	29	37	30	29	33	25	30	36	348
Doctoral	3	3	7	5	4	6	3	9	4	5	1	2	52
Total	26	35	46	27	37	49	43	52	58	51	44	58	526

Liberal Arts & Sciences													
Degrees Conferred, by Degree Level													
	09-10	10-11	11-12	12-13	13-14	14-15	15-16	16-17	17-18	18-19	19-20	20-21	Total
Post-Bachelor's Certificate	47	39	56	54	67	58	73	66	82	106	85	102	835
Sixth-Year Diploma/ Post-Master's Certificate	0	0	0	0	0	0	0	0	0	0	0	0	0
Master's	304	289	327	316	335	335	317	324	338	303	318	296	3,802
Doctoral	159	147	170	161	149	169	187	187	184	183	189	161	2,046
Total	510	475	553	531	551	562	577	577	604	592	592	559	6,683

Nursing													
Degrees Conferred, by Degree Level													
	09-10	10-11	11-12	12-13	13-14	14-15	15-16	16-17	17-18	18-19	19-20	20-21	Total
Post-Bachelor's Certificate	0	0	2	1	1	2	1	13	13	22	18	18	91
Sixth-Year Diploma/ Post-Master's Certificate	0	2	0	0	0	0	0	0	2	0	3	4	11
Master's	30	48	46	24	36	49	49	41	54	58	44	57	536
Doctoral	10	8	7	6	5	13	6	12	5	27	14	18	131
Total	40	58	55	31	42	64	56	66	74	107	79	97	769

Pharmacy													
Degrees Conferred, by Degree Level													
	09-10	10-11	11-12	12-13	13-14	14-15	15-16	16-17	17-18	18-19	19-20	20-21	Total
Post-Bachelor's Certificate	0	0	0	0	0	0	0	0	0	0	0	0	0
Sixth-Year Diploma/ Post-Master's Certificate	0	0	0	0	0	0	0	0	0	0	0	0	0
Master's	1	4	0	0	1	2	1	2	2	3	2	0	18
Doctoral	10	7	6	8	5	10	8	7	11	8	8	6	94
Total	11	11	6	8	6	12	9	9	13	11	10	6	112

Social Work													
Degrees Conferred, by Degree Level													
	09-10	10-11	11-12	12-13	13-14	14-15	15-16	16-17	17-18	18-19	19-20	20-21	Total
Post-Bachelor's Certificate	0	0	0	0	0	0	0	0	0	0	0	0	0
Sixth-Year Diploma/ Post-Master's Certificate	0	0	0	0	0	0	0	0	0	0	0	0	0
Master's	181	155	178	200	209	197	135	164	146	167	151	145	2,028
Doctoral	3	4	3	0	2	4	4	6	3	2	3	1	35
Total	184	159	181	200	211	201	139	170	149	169	154	146	2,063

UConn Health													
Degrees Conferred, by Degree Level													
	09-10	10-11	11-12	12-13	13-14	14-15	15-16	16-17	17-18	18-19	19-20	20-21	Total
Post-Bachelor's Certificate	0	0	2	2	0	5	16	2	15	21	7	17	87
Sixth-Year Diploma/ Post-Master's Certificate	0	0	0	0	0	0	0	0	0	0	0	0	0
Master's	43	51	46	47	44	50	52	53	50	52	57	43	588
Doctoral	29	28	29	23	28	16	27	33	26	20	14	18	291
Total	72	79	77	72	72	71	95	88	91	93	78	78	966

New Degree and Certificate Programs

New Degree Program

- MS in Data Science

New Graduate Certificates

- Advanced Business Certificate in Financial Technology
- Global Health
- Literacy Leadership
- Obesity Prevention and Weight Management
- Oceanographic Science and Technology
- Precision Nutrition

New Accelerated Pathways/4+1 Programs

- Applied and Resource Economics
- Communications
- Dietetics/Health Promotion Sciences
- Marine Sciences/Oceanography
- Sociology

New Dual Degrees

- JD/MPP
- JD/MPA

Selected Activities

Selected Activities for Incoming International Students^{iv}

- June Presented in ISSS pre-arrival webinar series

Selected Activities for Graduate Students and Postdoctoral Scholars

- July Participated in CETL teaching philosophy workshop

Selected Activities Primarily for Postdoctoral Scholars

- September *National Postdoc Appreciation week*
- July Postdoc Seed Awards

Selected Activities Primarily for Graduate Students

Fall 2021

- August Path to PhD - Conflict resolution
- Fall GRAD 5900 - Communicating your research
- October Student Involvement Fair
- October Fellows reception
- November Building a relationship with your advisor - Engineering graduate seminar
- November DEIJ Community Workshop
- December Fellows - end of semester celebration
- December Online orientation launch for Spring 2022

Spring 2022

- January Participated in CETL TA orientation
- February International student orientation to immigration and academics
- February Navigating graduate school with disabilities - panel discussion
- March Fellows meeting
- March Meeting for graduate students affected by conflict in Ukraine

^{iv} In collaboration with International Student and Scholar Services

- March Participated in CETL panel on developing a teaching philosophy statement
- March Participated in CETL panel on developing a diversity statement
- March Navigating graduate school - first-get graduate student panel
- April Graduate and professional student appreciation week
- April Fellows meeting
- April Mentoring workshop, John Loff Leadership Academy
- April/May Microaggressions and bystander intervention workshop - Sociology
- May Fellows end of year celebration
- May Negotiation workshop - Engineering

Summer 2022

- June/July 3-minute thesis preparation workshops
- July Online orientation launch for Fall 2022

Selected Programming in Collaboration with the Center for Career Development

Summer 2021

- Summer writing institute for fellows
- Graduate student orientation - Virtual resource room on thinking about careers and overview of Center for Career Development
- UConn/URI collaboration
 - Tips for negotiating job offers
 - Optimizing your documents for applicant tracking systems

Fall 2021

- Timely Topics session on career diversity
- UConn/URI collaboration
 - CV to resume conversion recorded webinar
- Postdoc Appreciation Week - Job search overview
- Monthly career preparation webinars

Spring 2022

- Graduate Student Appreciation Week - Linked photo sessions, CV/resume reviews
- Monthly career preparation webinars
- UConn/URI collaboration
 - Decoding job postings
 - Tips to prepare for your academic job search
- Graduate student orientation - Virtual resource room on thinking about careers and overview of Center for Career Development

Timely Topics

Fall 2021

Administrative Track

- 9 September GA leave, academic leave, or time off?
- 22 September Graduate Admissions Forum
- 27 October Using annual reviews to help graduate students succeed (cross-listed with faculty track)
- 10 November Updating your catalog copy and using the GPAR system
- 16 November Fellowships process and updates (cross-listed with faculty track)

Faculty track

- 14 September Career outcomes for PhDs & implications for PhD training
- 23 September Writing effective reference letters for NFS GRFP applicants
- 6 October Supporting graduate students with disabilities
- 20 October From expectations to evaluations: The importance of timely feedback
- 27 October Using annual reviews to help graduate students succeed (cross-listed with administrative track)
- 16 November Fellowships process and updates (cross-listed with administrative track)

Spring 2022

Administrative Track

- 27 January Setting up for success: Recruitment, offer letters, and hiring of GAs
- 7 April Understanding employment rules and opportunities for international

- students: CPT, OPT, and on campus employment (cross-listed with faculty track)
- 19 May Graduate admissions forum
- 1 June Graduate assistant payroll procedures
- 8 June Updates to the GEU contract (cross-listed with faculty track)

Faculty Track

- 10 February Information for new graduate faculty advisors
- 24 March Digital dissertation: How to embark on digital scholarship at the graduate level (also open to graduate students)
- 7 April Understanding employment rules and opportunities for international students: CPT, OPT, and on campus employment (cross-listed with administrative track)
- 8 June Updates to the GEU contract (cross-listed with administrative track)

Slate Training Events

Summer 2021

- May Email: Basics; and Email: Advanced Topics
- July Pregrad Applications: Basics; and Pregrad Applications :Advanced Topics

Fall 2021

- October Processing Applications
- November Reading & Reviewing Applications

Spring 2022

- January Slate Queries
- February Slate Reports
- March Slate CRM Overview

Slate CRM Activity

(2021/2022)

Email/SMS Messages

- 400+ new active Messages created in FY 21-22
- Messages Delivered
 - System Emails: ~140,000
 - Non-System Emails (Drip campaigns and One-offs): 950,000+
 - SMS/Texts: 500+ (*New for FY 21-22*)

Events

- 400+ Events Held in 2021/2022
- 8500+ Registrants to events Held in 2021/2022

Inquiry Forms

- 11 Inquiry Forms created in FY 21-22
- 13,000+ inquiry forms submitted

Records Created

- 31,000+ New Person Records

Application Records

- 20,000+ New Application Records Created
 - 19,000+ for The Graduate School
 - 800+ for pregrad programs with applications in Slate
- ~10,800+ Application Records Submitted (incl. those who may not have fulfilled an app fee)
 - 10,500+ for The Graduate School
 - ~300 for pregrad programs with applications in Slate

Diversity-focused Recruiting Events

- 12 July: Institute for the Recruitment of Teachers (IRT) – hosted virtually by The Graduate School in collaboration with Neag and students from English, Philosophy, and Anthropology and the Director of Graduate Studies from English.
- 25-29 October: Society for the Advance of Chicanos/Hispanics and Native Americans in Science (SACNAS) – attended virtually by The Graduate School partnering with Engineering and the SLAC Team, <https://slac.uconn.edu/people/> (2 staff, 2 students)
- 29-31 October: Out in STEM (oSTEM) – attended virtually by The Graduate School partnering with Engineering and the SLAC Team <https://slac.uconn.edu/people/> (2 staff, 3 students)
- 10-12 November: Annual Biomedical Research Conference for Minoritized Scientists (ABRCMS) – attended virtually by The Graduate School in collaboration with UConn Health (1 dean, 1 faculty, 1 staff)